



Overview

**Social Security Policy Support
(SSPS) Programme**

Executive Summary

SSPS has helped transition Bangladesh's social protection system from fragmented, scheme-based safety nets into a coordinated, lifecycle-oriented reform architecture under the National Social Security Strategy (NSSS), anchored in governance, digitization, and fiscal integration. This shift includes →



01

Governance

Formal institutionalization of NSSS governance (CMC, Thematic Clusters, M&E Committee)

02

Rationalization

Consolidation and rationalization of programmes

03

Digitization

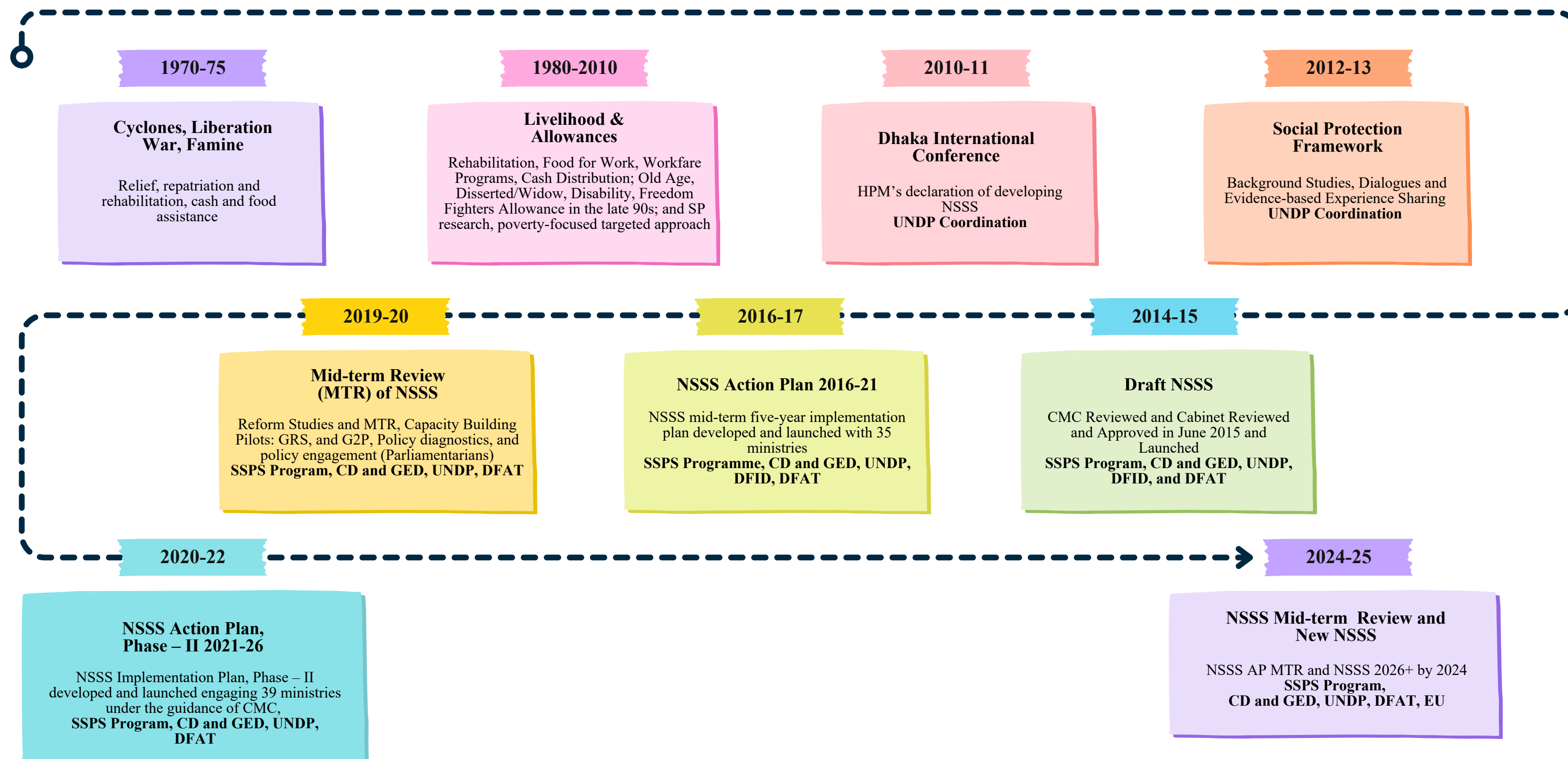
Digitization of delivery systems (G2P, MIS, IBAS++ linkage)

04

Mainstreaming

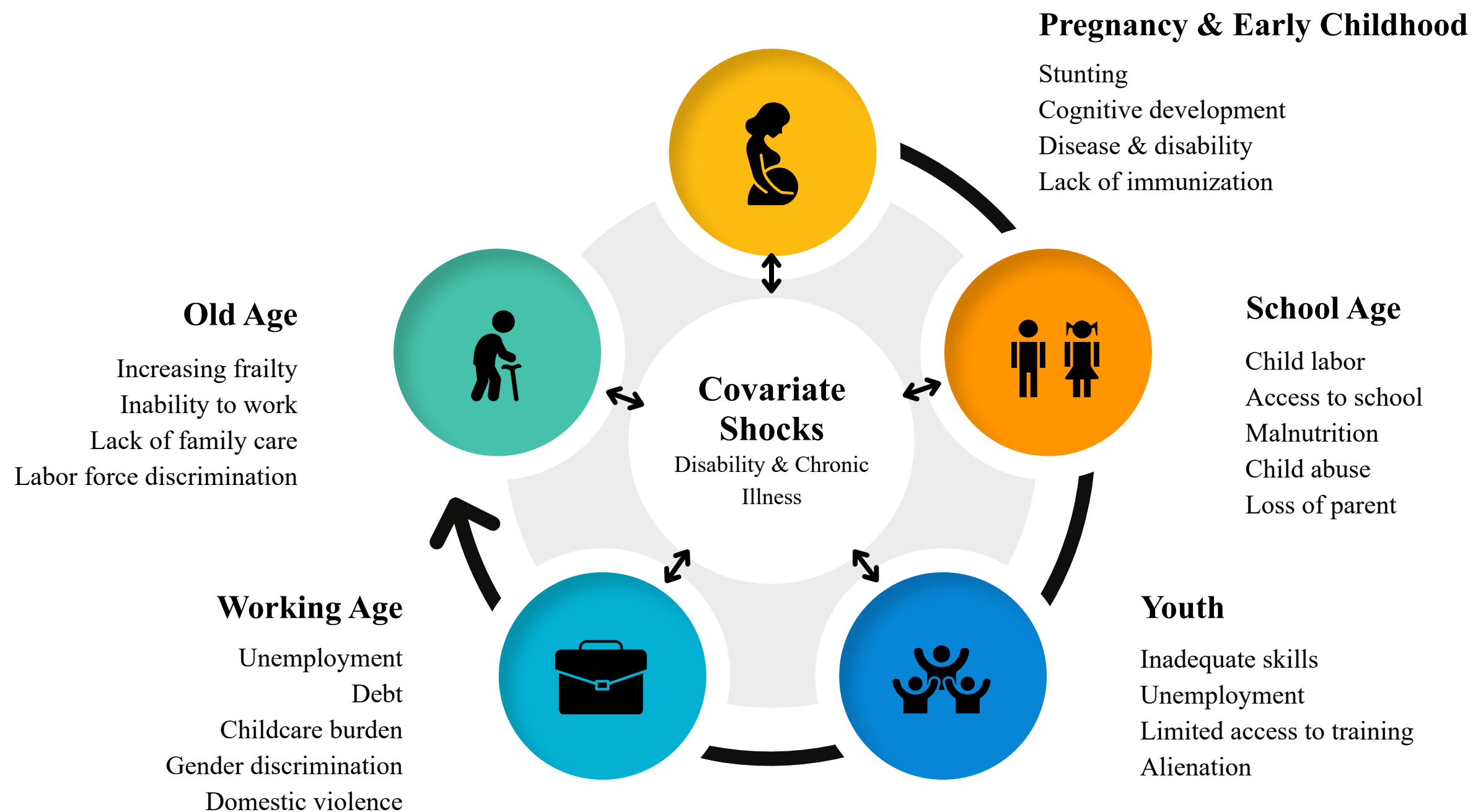
Embedding reform within Five-Year Plans and national budgeting processes

Evolution of Bangladesh Social Protection



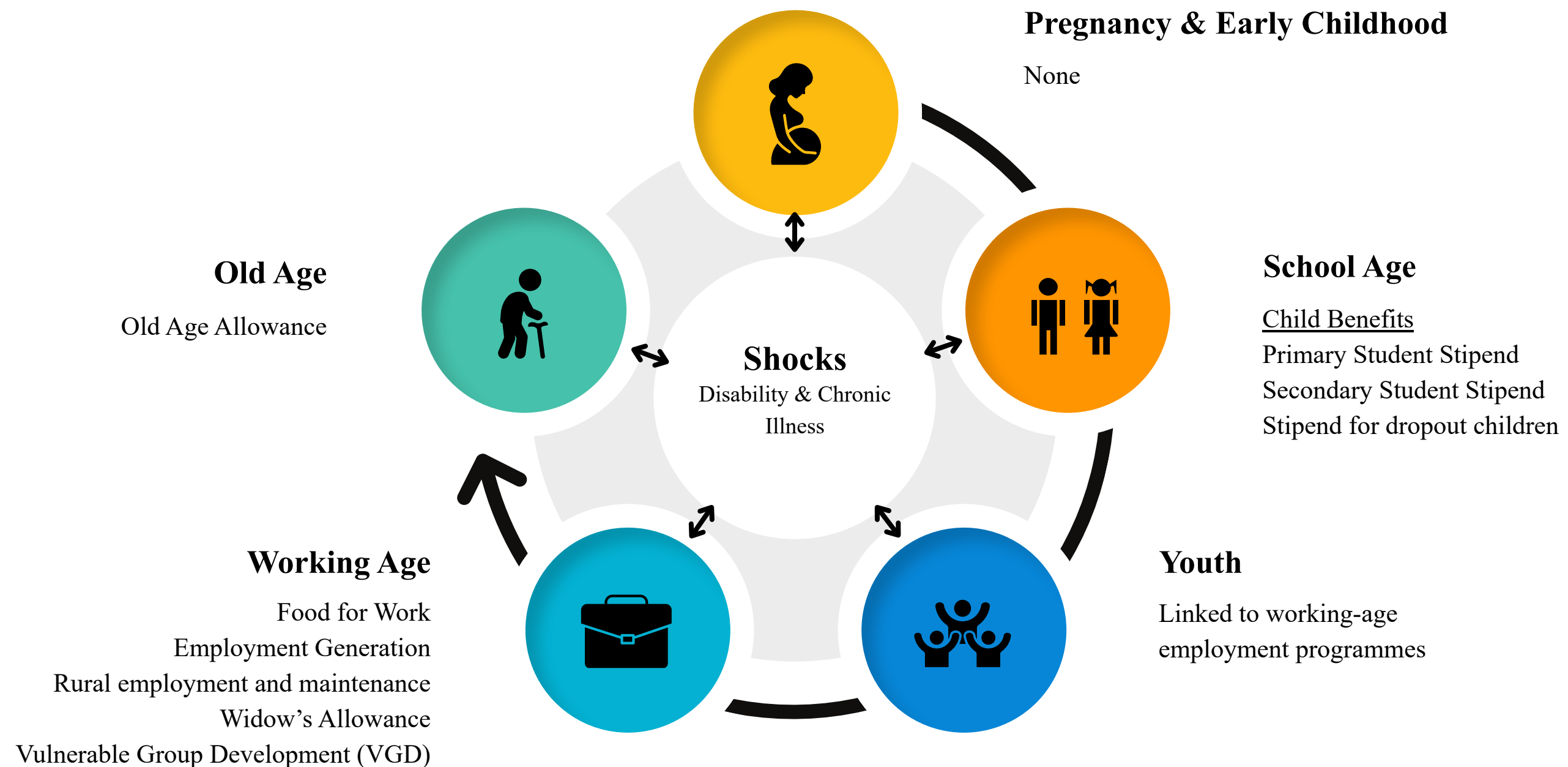
Life-cycle Risks

Life cycle risks in Bangladesh, encompassing vulnerabilities from pregnancy to old age, are heavily intensified by climate change, malnutrition, and economic insecurity.

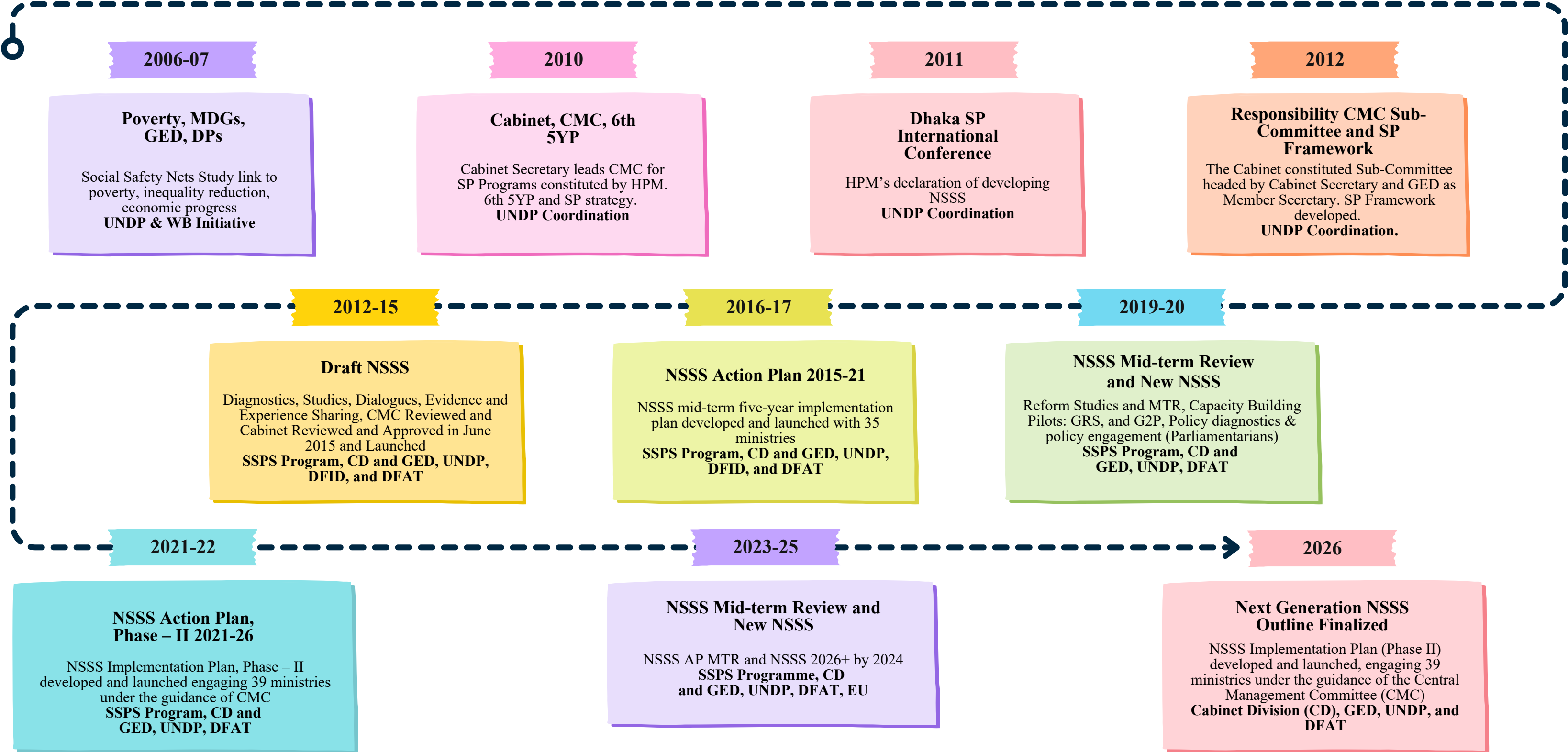


Life-Cycle Programmes in Bangladesh

Life-cycle programmes in Bangladesh are integral components of the National Social Security Strategy (NSSS), providing targeted, non-contributory cash and food assistance across different life stages to reduce poverty.



Development of NSSS 2015-25 and Action Plans



Strategic Role of SSPS

01

A reform accelerator for NSSF implementation

02

A reform accelerator for NSSF implementation

03

A technical convenor across 39+ ministries

04

A bridge between policy diagnostics, research, fiscal reforms & system-level execution

Background of the SSPS Programme

The Social Security Policy Support (SSPS) Programme was established in 2014 as a flagship institutional reform mechanism to support the implementation of Bangladesh's National Social Security Strategy (NSSS) and its guided reform agenda.

SSPS serves as a catalyst for system-wide transformation, moving from fragmented safety nets toward an inclusive, lifecycle-based, and fiscally sustainable social security system.



PROGRAMME GOAL

Build an inclusive social security system that strengthens the social contract, enhances stability, and improves resilience to shocks and stresses.



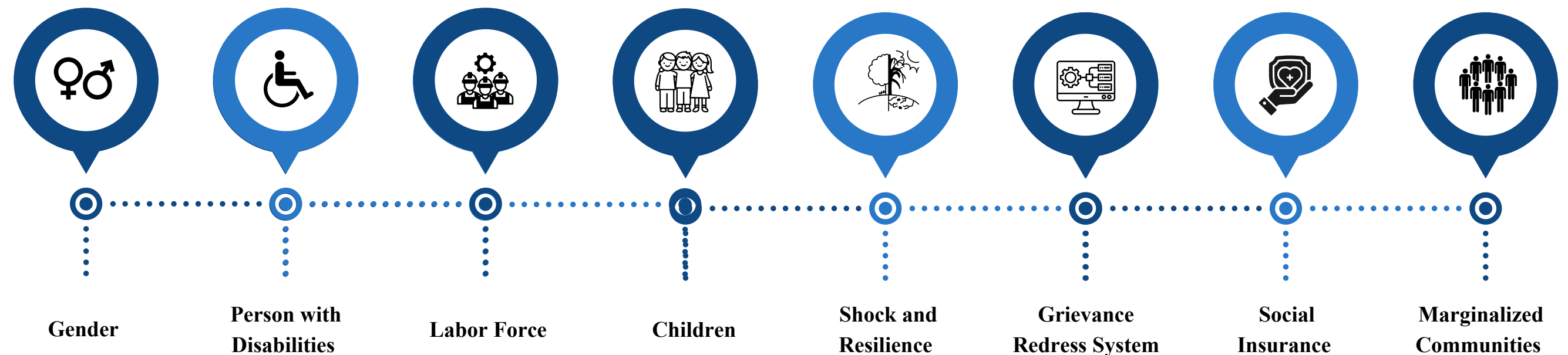


Core Areas of Engagement



- ✓ NSSF formulation and implementation (2015–2026)
- ✓ Action Plan Phase I & II reform acceleration
- ✓ Social insurance development (NSIS)
- ✓ Digital MIS and M&E system strengthening
- ✓ Gender- and disability-responsive policy integration
- ✓ Inter-ministerial coordination mechanisms (CMC, Thematic Clusters)

SSPS Programme aims to strengthen the system prioritizing areas



SSPS operates at the nexus of governance, delivery & inclusion, ensuring reforms are both technically sound and socially responsive.



Project Organisation Structure

Project Steering Committee for Social Protection Programme

Chaired by Cabinet Secretary (with members from GED, LGD, selected line Ministries & DPs)

Project Board/Project Management Committee

Senior Beneficiary
GoB (GED and Cabinet Division)

Executive/Chair
Member, GED

Senior Supplier
UNDP + co-funding and Development Partners

PMC chaired by Local Government Division

Deputy National Project Director (DNPDP)

(Cabinet Division)

Assistant Project Director (Cabinet Division)

National Project Director

Project Assurance

UNDP (Poverty Reduction Cluster)

SOCIAL PROTECTION SECRETARIAT

Senior Social Protection Specialist, Project Manager

Technical Assistance Team of Specialists, Finance, Admin Officers

Deputy National Project Director (DNPDP)

Assistant Project Director

(GED)

Component 1

Social Protection Governance

Institutionalizing of policy framework
Policy research centre
Innovations challenge fund
Parliamentary & CSO engagement
Micro-insurance pilot

Component 2

Social Protection Systems

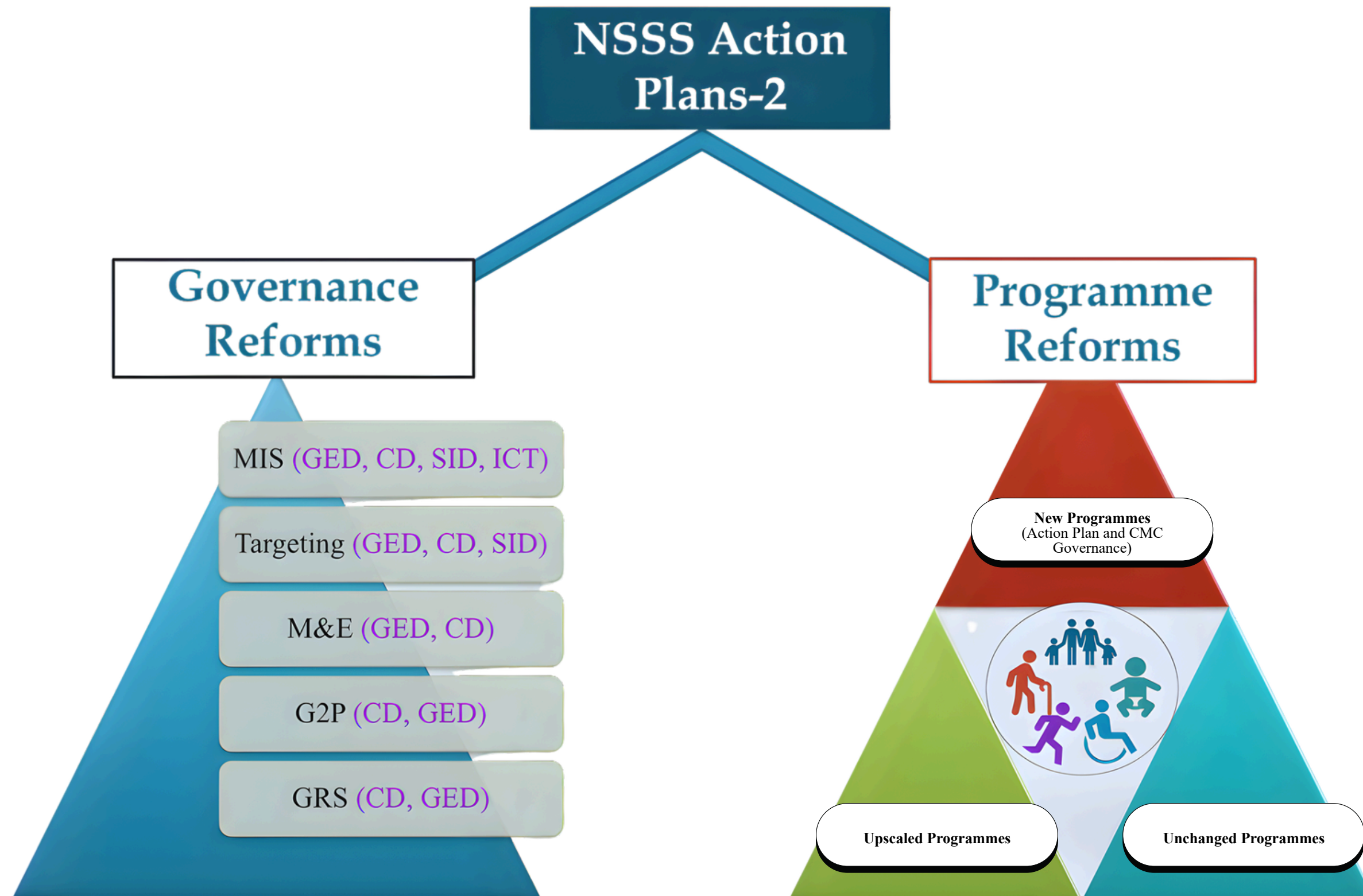
Establishment of G2P payment platforms
Development of field M&E and payment compliance systems

Component 3

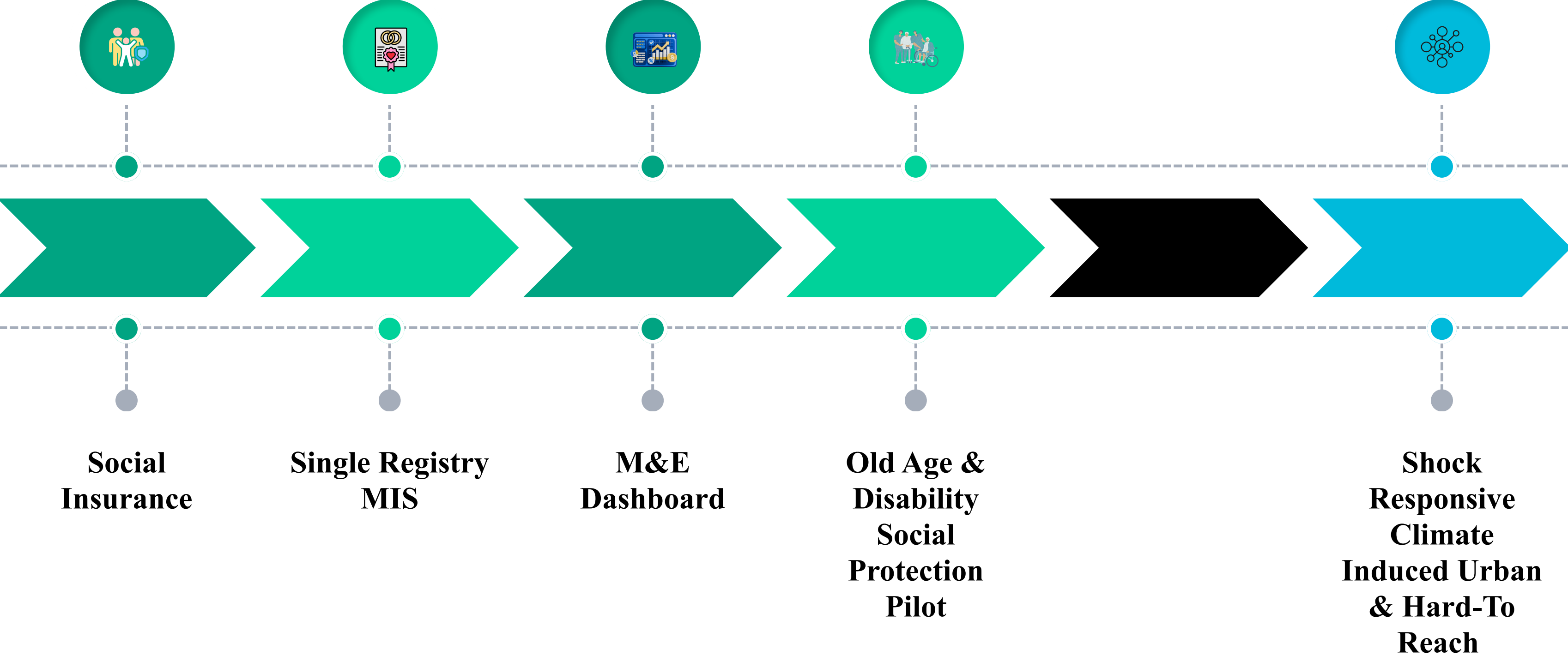
SWAPNO pilot

Pilot scheme informing social protection strategy
Field testing of payment platforms, micro-insurance delivery, M&E database, etc.

Support Provides to Key Reform Areas



Social Protection Model Development



Institutional Governance Strengthening

Institutional Leadership & Coordination

- Central Management Committee (CMC) oversight and reform steering
- Action Plan Phase II (2021–2026) formulation & AWP alignment
- Action Plan Sub-Committee operationalization

Thematic Reform Platforms

Five Thematic Clusters:

Food Security & Disaster Assistance; Human Development & Social Empowerment; Labour & Livelihood Intervention; Social Allowances; Social Insurance

Multi-Stakeholder Engagement

- Local Consultative Groups (LCG) capacity strengthening
- Governance workshops at national & local levels
- Collaboration with Non-State Actors

Report: [Mapping Social Protection for Marginalized Communities in Bangladesh](#)

Social Protection Systems & Delivery Modernization

Digital & Financial Systems

- G2P-enabled social transfers through MFS e-payments
- Electronic payment piloting and software innovation
- Integration of GRS, M&E, and MIS systems

Field-Level Strengthening

- Local compliance monitoring through field M&E
- Training of local payment agents
- Strengthening grievance redress and rights-protection mechanisms

Strengthening Governance and Delivery Systems of Social Protection

Bangladesh's Social Protection System

Before and After SSPS

Context	Before SSPS	After SSPS Reform Acceleration (2015–2025)
Policy Architecture	Fragmented programmes with limited lifecycle coherence	NSSS institutionalized; Action Plan Phase I & II operationalized across 39+ ministries
Programme Structure	100+ overlapping schemes with duplication	Rationalized from 140 → 95 programmes; improved lifecycle categorization
Governance Mechanism	Weak inter-ministerial coordination; limited monitoring structure	Central Management Committee (CMC) strengthened; Thematic Clusters operational; Local governance structures established
Monitoring & Accountability	Manual tracking; limited reform performance oversight	Web-based M&E Dashboard; NSSS M&E Committee institutionalized; sex-disaggregated monitoring
Delivery System	Paper-based systems; limited financial inclusion integration	National scale-up of digital G2P payments; interoperability with NID & financial systems
Coverage of Elderly & PwDs	Targeted approach; limited coverage (OA: 4.4m; PwDs: 1.8m baseline)	128.5% increase in PwD beneficiaries; Old Age Allowance expanded under near-universal approach

Bangladesh's Social Protection System

Before and After SSPS (Cont.)

Context	Before SSPS	After SSPS Reform Acceleration (2015–2025)
Fiscal Commitment	Modest allocation; limited fiscal dialogue on sustainability	Social protection budget nearly doubled (FY 2025–26); fiscal space reform discussions (e.g., LDT)
Inclusion Framework	Weak gender mainstreaming; limited disability governance	Gender-responsive SP integration; UNCRPD governance mechanism initiated; marginalized groups engaged
Urban & Shock Responsiveness	Urban SP underdeveloped; limited adaptive framework	Urban shock-responsive SP model endorsed; adaptive SP integrated into NSSF 2026+
Social Insurance	Feasibility discussions only; no operational roadmap	NSIS roadmap finalized; draft policy prepared; Social Security Unit formed at MoLE
Evidence & Research Integration	Limited policy-research linkage	Research, pilots, diagnostics systematically feeding into NSSF 2026+ formulation
Stakeholder Engagement	Limited structured engagement with non-state actors	National Conference (2,500 participants); OPDs, Youth Network, PLHIV consultations integrated into reform dialogue

SSPS Reform Progression

SSPS moved beyond strategy development to leading coordinated institutional implementation and grow your cash.

Foundation & Strategy

- NSSS launched
- Governance structures created
- Initial policy diagnostics
- Social Protection in 6th–7th FYP
- Early universal allowance groundwork

Institutionalization & Piloting

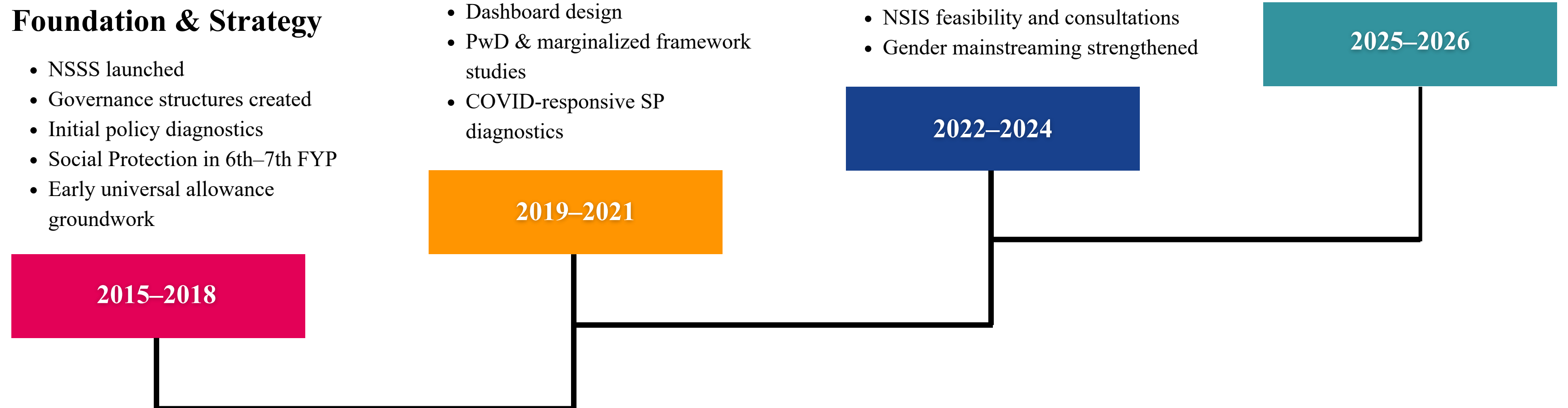
- Action Plan Phase I
- Mid-Term Review
- G2P pilots
- Dashboard design
- PwD & marginalized framework studies
- COVID-responsive SP diagnostics

Acceleration & Scale

- Action Plan Phase II
- Programme consolidation (140 → 95)
- Digital integration roadmap
- Fiscal expansion momentum
- NSIS feasibility and consultations
- Gender mainstreaming strengthened

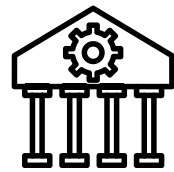
Structural Transformation

- Budget nearly doubled
- 128.5% PwD expansion
- NSSS Final Review completed
- NSIS Roadmap & Draft Act
- Urban shock-responsive SP integrated
- Dashboard institutionalized
- NSSS 2026+ under preparation



SIGNIFICANT ACHIEVEMENTS OF SSPS (2015–2026)

From Policy Framework to Operational Transformation



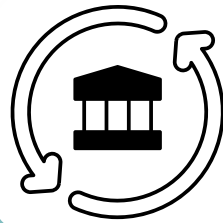
Strategic Institutionalization

- NSSS formulation and Action Plans (2015–2026)
- Social Protection integrated into 6th–8th Five-Year Plans
- NSSS Final Review completed (83.7% indicators progressing well)
- Technical groundwork for NSSS 2026+



Governance Architecture Institutionalized

- Multi-tier structure (National → Upazila)
- CMC strengthened; 5 Thematic Clusters operational
- M&E governance under GED
- Capacity building of national & local officials



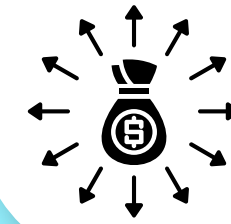
Structural Reform Foundations

- Enabled Universal Pension & Social Insurance reform transition
- NSIS Roadmap defining financing, governance, and phased rollout
- Draft NSIS Act prepared for Cabinet review
- Social Security Unit established under MoLE
- UNCRPD governance mechanism initiated
- Disability-responsive SP framework advanced



Digital Public Infrastructure

- Single Registry MIS roadmap for unified beneficiary management
- M&E Dashboard integrated with IBAS++ for fiscal-programme linkage
- Interoperability design (NID + financial systems + programme MIS)
- Grievance Redress System institutionalized for transparency
- G2P digital payment integration strengthened



Financial Inclusion & G2P

- National scale-up of digital G2P payments
- MFS pilots (bKash, Rocket, Postal Cashcard)
- Integration with financial inclusion systems
- Local delivery capacity strengthened



Evidence & Inclusion

- Shock-responsive, disability, urban & marginalized SP frameworks
- 128.5% increase in disability beneficiaries
- Youth & non-state actor engagement platforms
- 100% paperless National Conference (2,500 participants)

Significant Impacts (2015–2025)



**System
Reform**



**Scale
Expansion**



**Structural
Foundations for
the Future**

SSPS has facilitated the transition of Bangladesh's social protection from fragmented, scheme-based safety nets into a coordinated lifecycle architecture. By institutionalizing unified governance and digital G2P delivery, the program has established a rights-based foundation for a permanent and fiscally integrated national social security system.

Significant Impacts (2015–2025) [Cont.]

140 → 95



Schemes consolidated to reduce duplication and administrative overlap

128.5%



Growth in disability beneficiaries through national scale-up.

2x Budget



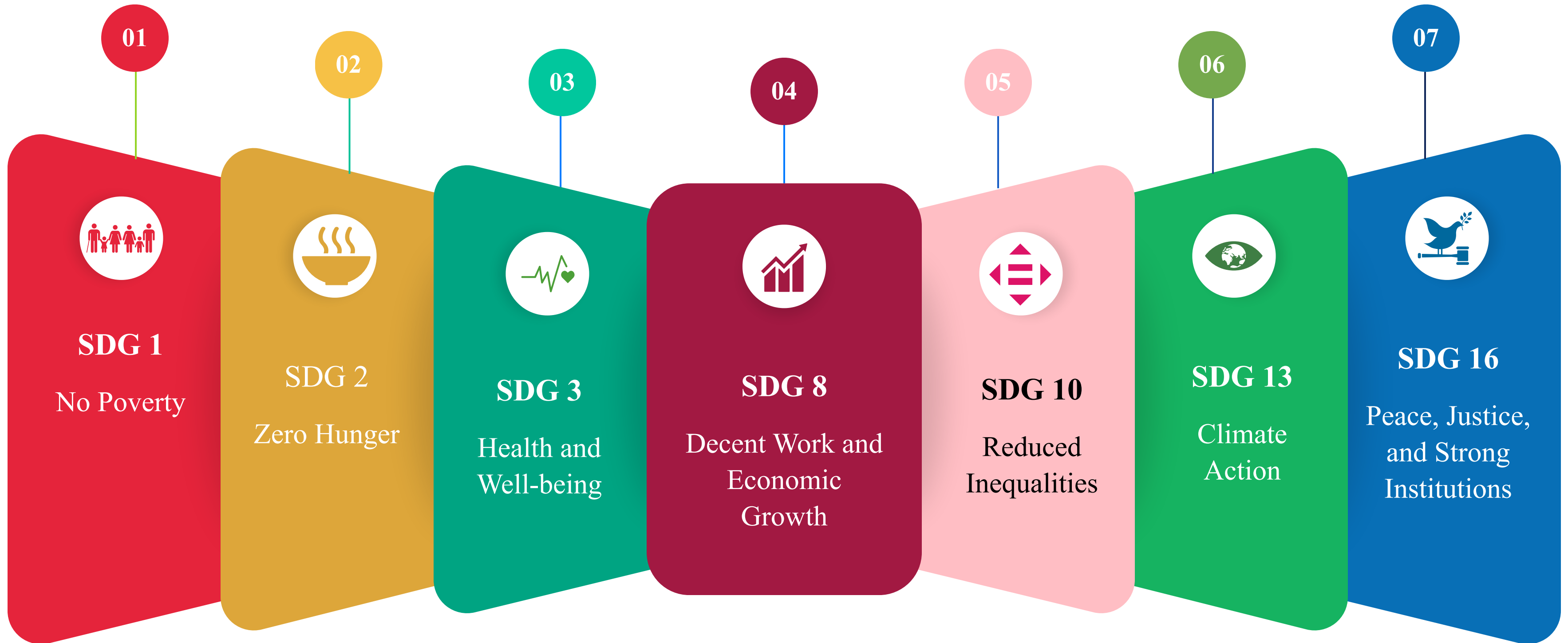
Doubled social protection allocation by FY 2025–26.

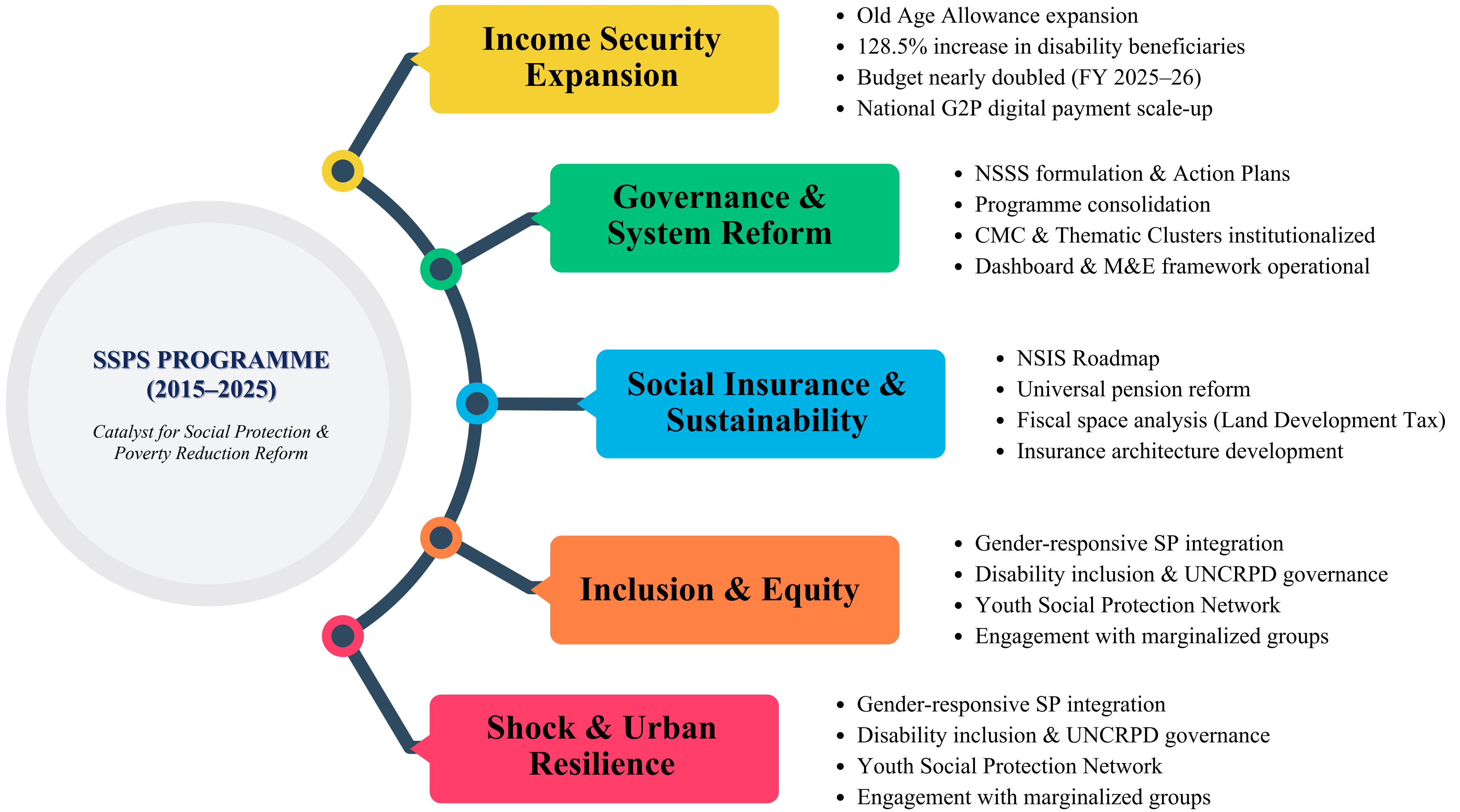
- **Institutional Reform:** Transitioned from fragmented safety nets to a lifecycle-based system, consolidating 140 schemes into 95 under a unified CMC-led governance structure with 83.7% reform progress.
- **Scale & Digitalization:** Doubled social protection funding and expanded disability coverage by 128.5%, supported by national digital G2P scaling and integrated iBAS++ fiscal tracking.
- **Future Architecture:** Advancing the NSSS 2026+ framework through the 2025 Draft Insurance Act and a national Single Registry MIS to establish a permanent, rights-based safety net.



- OAA coverage increased 29.5% from 2019 baseline
- PwD coverage increased to 11.55% from 2019 baseline
- OAA beneficiaries increased from 2.08 million (FY 2021–22) to 2.365 million (FY 2022–23)

SDGS Addressed





SSPS Key Deliveries in 2025





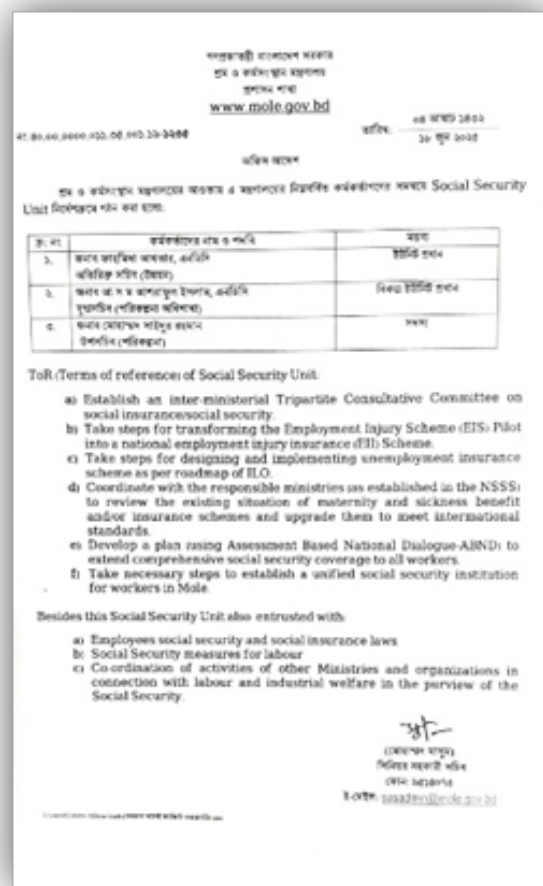
NSSS Review Workshop (Jan 23, 2025)



Development Partners at Two-day Workshop on NSIS 19-20 February 2025



During the Fourth Social Insurance Forum on 25 June 2025, SSPS presented key reform proposal



The Ministry of Labour and Employment (MoLE) established a Social Security Unit to lead the National Social Insurance Scheme (NSIS). This unit manages a comprehensive roadmap for unemployment, maternity, sickness, and injury insurance, ensuring institutional and legal alignment with ILO standards.

Systems of Universal Pension, PwDs & Social Insurance Strengthened

- Completion of NSSS Final Review (Phase II: 2021–2026)
- Formal initiation of NSSS 2026+ development
- Draft NSIS Roadmap finalized and circulated
- Establishment of Social Security Unit under MoLE

Governance Systems Strengthened for Lifecycle Social Protection

- Completion of NSSS Final Review (Phase II: 2021–2026)
- Formal initiation of NSSS 2026+ development
- Draft NSIS Roadmap finalized and circulated
- Establishment of Social Security Unit under MoLE



In August 2025, SSPS organized an inception workshop to advance youth engagement in Bangladesh's social protection landscape



National Symposium on International Day of Persons with Disabilities



National Conference on Social Protection 2025

Gender-Responsive Policy Advice & Accountability Tools Strengthened

- Web-based M&E Dashboard institutionalized
- Sex- and age-disaggregated data integrated
- M&E Chapter included in draft NSSS 2026+
- Gender Good Practice Note initiated (SWAPNO field evidence)
- 39 ministries oriented on SP reform through structured engagement

Influence of Non-State Actors & Inclusion Strengthened

- National Conference (2,500 participants; first 100% paperless national conference)
- IDPD National Symposium (50+ OPDs engaged nationally)
- Youth Social Protection Champions Network established
- UNCRPD governance mechanism initiated (MoFA-led structure)
- Consultations initiated with PLHIV & sex workers for NSSS 2026+

SIGNIFICANT PUBLICATIONS

Blue Economy (2023)

Policy Support and Institutional Arrangement for Blue Economy in Bangladesh



Programme Response (April 2022)

A Brief Analysis of Social Protection Programme Response to Covid-19 Pandemic in Bangladesh



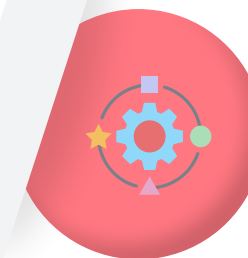
Old Age (May 2022)

Pilot Study on Universal Old Age Allowances (OAA) in Bangladesh



Assessment Framework (June 2022)

Assessment, Scope and a Framework for Introducing NSSS, M&E Dashboard Development



Social Protection (January 2021)

A Compendium of Social Protection Researches



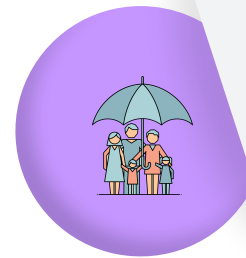
Urban (2022)

A Model of Urban Social Protection in Bangladesh



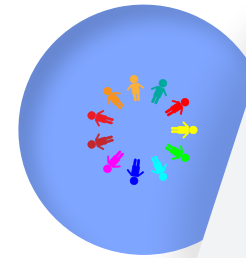
Toolkit (2023)

Social Protection Toolkit



Non-State Actor (2023)

Non-State Actor Report on Social Protection: A Mapping of Social Protection Needs for the Marginalized Communities in Bangladesh



SIGNIFICANT PUBLICATIONS (CONT.)

Strategic & Reform-Level

Strategic & Reform-Level | Draft Outline & Formulation Framework for NSSS 2026+ (2025) | Post National Conference on Social Protection 2025 | Re-strategizing Bangladesh's Social Protection



Gender-Responsive & Women-Focused

Gender Good Practice Note (In development – 2025/26) | SWAPNO Field Reports (2025) | ICVGD Phase II Endline Infographic (2019–2025)



Re-strategizing Bangladesh's Social Protection

National Social Insurance Scheme (NSIS) Roadmap (2025) | Draft NSIS Policy Framework | Employment Injury Insurance (EII) Reform Inputs



Disability & Inclusion

Social Protection Framework for Persons with Disabilities | Accessibility Matters: A Review of Disability Inclusion in the Digital Ecosystem of Bangladesh |



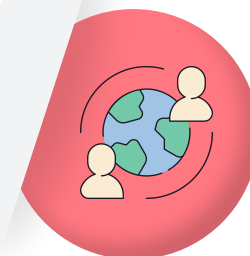
Fiscal Space & Sustainability

Unlocking the Revenue Potential of Land Development Tax in Bangladesh | Strategic Consideration: Sustaining Social Protection Amid Inflation and Rising Vulnerability (2025)



Migration & Labour

Strengthening Bangladesh's Labour Migration Institutions for Skilled and Competitive Migration | Contribution to GCM Shadow Report (IMRF 2026 Preparatory Process)



Urban, Poverty & Data

HIES 2022-based Study; finalized March 2025

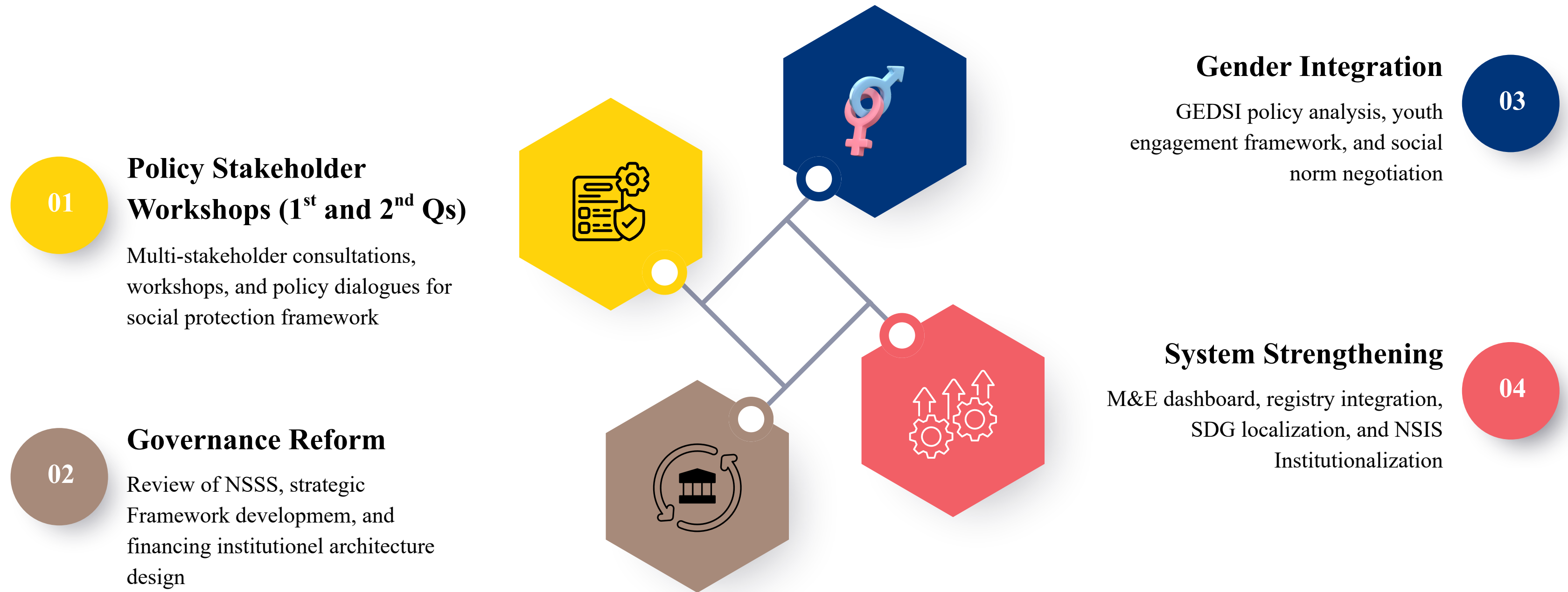


Digital Governance & Monitoring

Digital Governance & Monitoring | Revised Monitoring & Evaluation Framework (NSSS 2026+)



SSPS Program Ongoing Key Activities



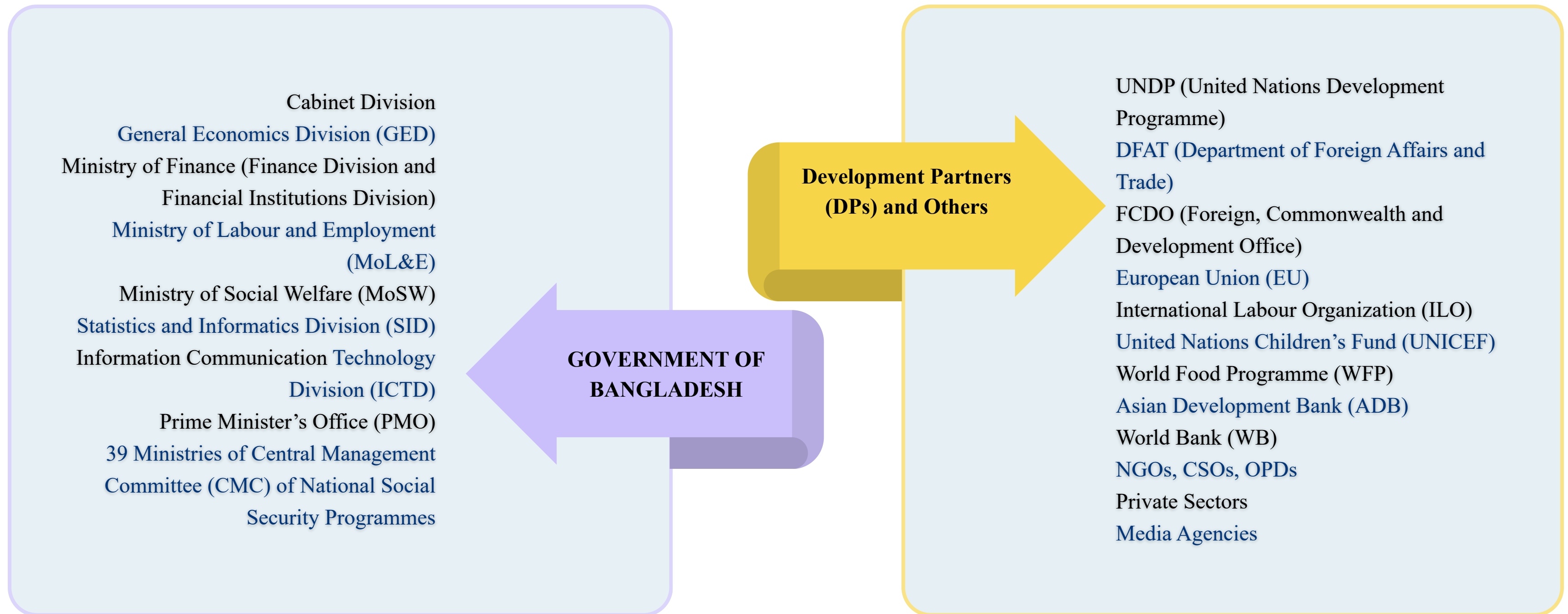
Our Partners

PROJECT STEERING COMMITTEE
(PSC) CHAIRED BY THE CABINET
SECRETARY



Our Working Partners

Local Consultative Group: Governance and Social Protection



Thank You

Prepared by:
Sanjida Sultana
Research Associate
Social Security Policy Support (SSPS) Programme, UNDP Bangladesh

www.socialprotection.gov.bd