



National Conference on Social Protection 2025

Single Registry System for Social Protection in Bangladesh

Abul Basher Md. Amir Uddin
Joint Secretary, Finance Division



Date : 01 September 2025 | Venue : BCFCC, Dhaka

Discussion Points

- Policy Documents Mandate
- Digital Transformation Journey
- Statistics of FY 2025-26 Social Protection
- Motivation for Single Registry
- Single Registry Structure
- Dynamic Social Registry to improve Targeting

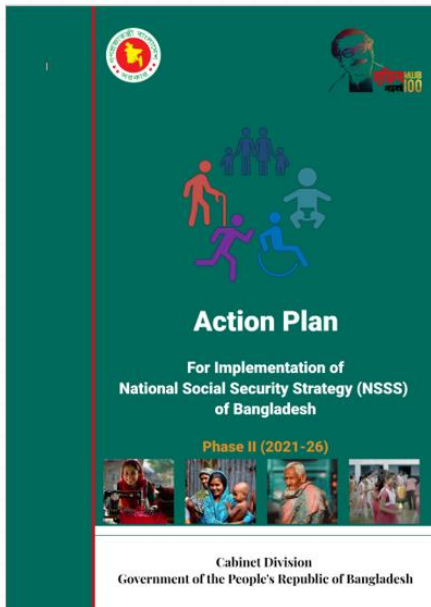
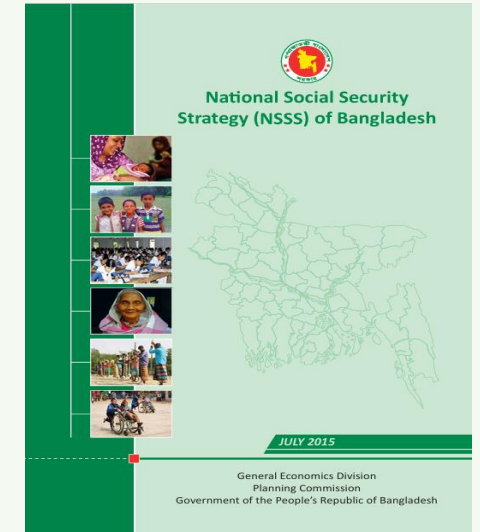
Role of Finance Division as Envisaged in NSSS

- Ensure necessary Funds
- Maintain a financial management system (MIS) linked with NID.
- Recommend process and procedure for performance based monitoring of social security programmes
- Transform the Government to Person (G2P) payment systems
- Establish an effective grievance redress module (GRM) in SPBMU MIS linked with CGRS

Single Registry as Envisioned in Policy Documents

- High quality MISs need to be in place
- The Government will establish a national Single Registry based on scheme-specific MISs that communicate with each other
- The Single Registry uses the database from the national identity system

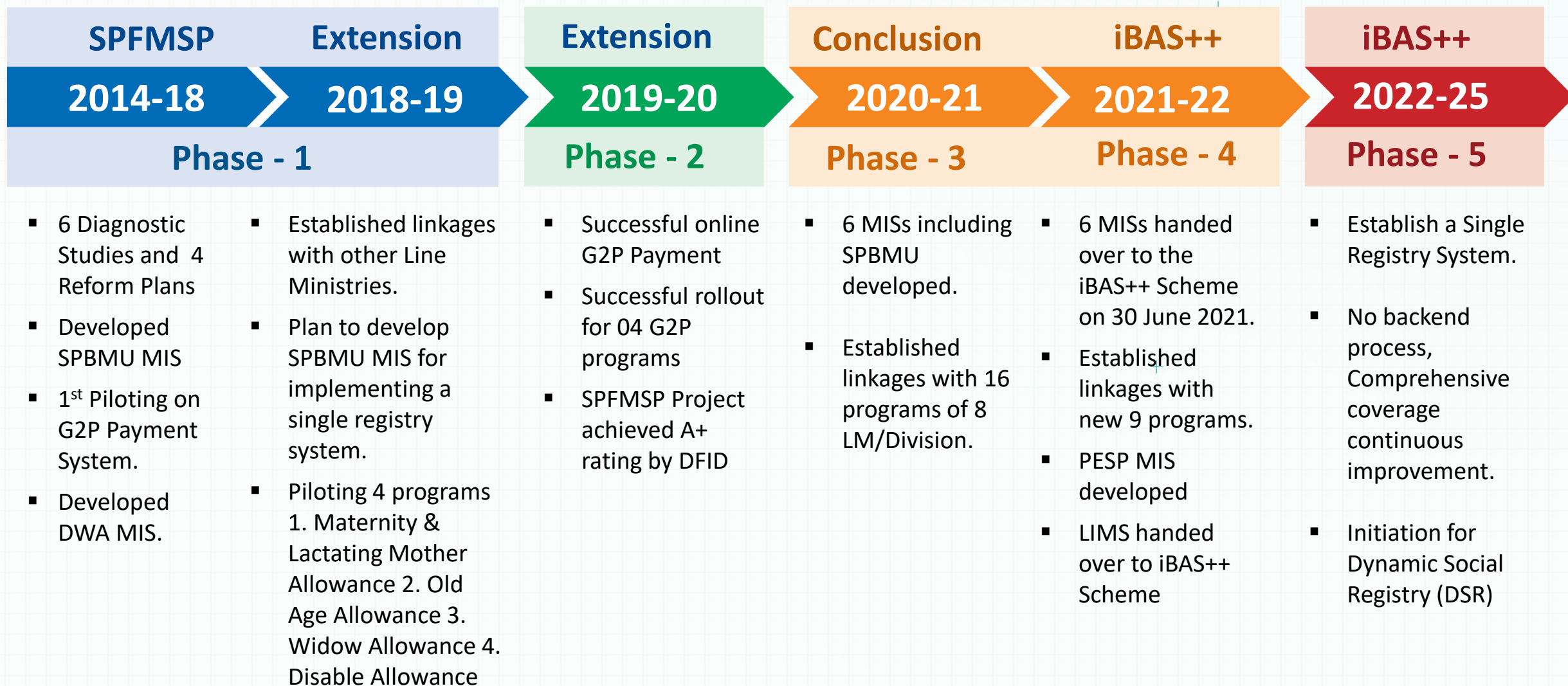
Page: XXVI, National Social Security Strategy



SPBMU-MIS was created by Finance Division as a part of developing a National Single Registry;

(NSSS Action Plan II, Page 93)

The Journey of Digital Transformation of Social Protection



Current MISs Integrated with Single Registry System

Maintain by iBAS++		
SL	Ministry/Division	MISs
1	Secondary and Higher Secondary Education Division	HSP MIS
2		DSHE MIS
3	Technical and Madrasah Education Division	DME MIS
4		EESP MIS
5		DTE MIS
6	Primary and Mass Education Ministry	PESP MIS
7	Ministry of Labor and Employment	DOL MIS
8	Finance Division	SPBMU MIS
9	Ministry of Disaster Management and Relief	EGPP (Developed but not implemented yet)

Maintain by other Line Ministries		
SL	Ministry/Division	MISs
10	Ministry of Social Welfare	DSS MIS
11	Ministry of Liberation War Affairs	MoWLA MIS
12	Ministry of Women and Children Affairs	DWA MIS
13	Ministry of Disaster Management and Relief	EGPP+

Social Security Statistics of FY 2025-26

FY 2025-26

Safety Net program **95**

Total Non-Cash/ Mix program **75**

Total Cash program **20**

SR G2P Program **15**

iBAS++ G2P Program **03**

Probable G2P Program need to Integrated **02**

Total Non-Cash Program in Single Registry **02**

Allocation for Social Protection

Budget: **1,26,731 crore**

16.05% of Total Budget

2.03% of GDP

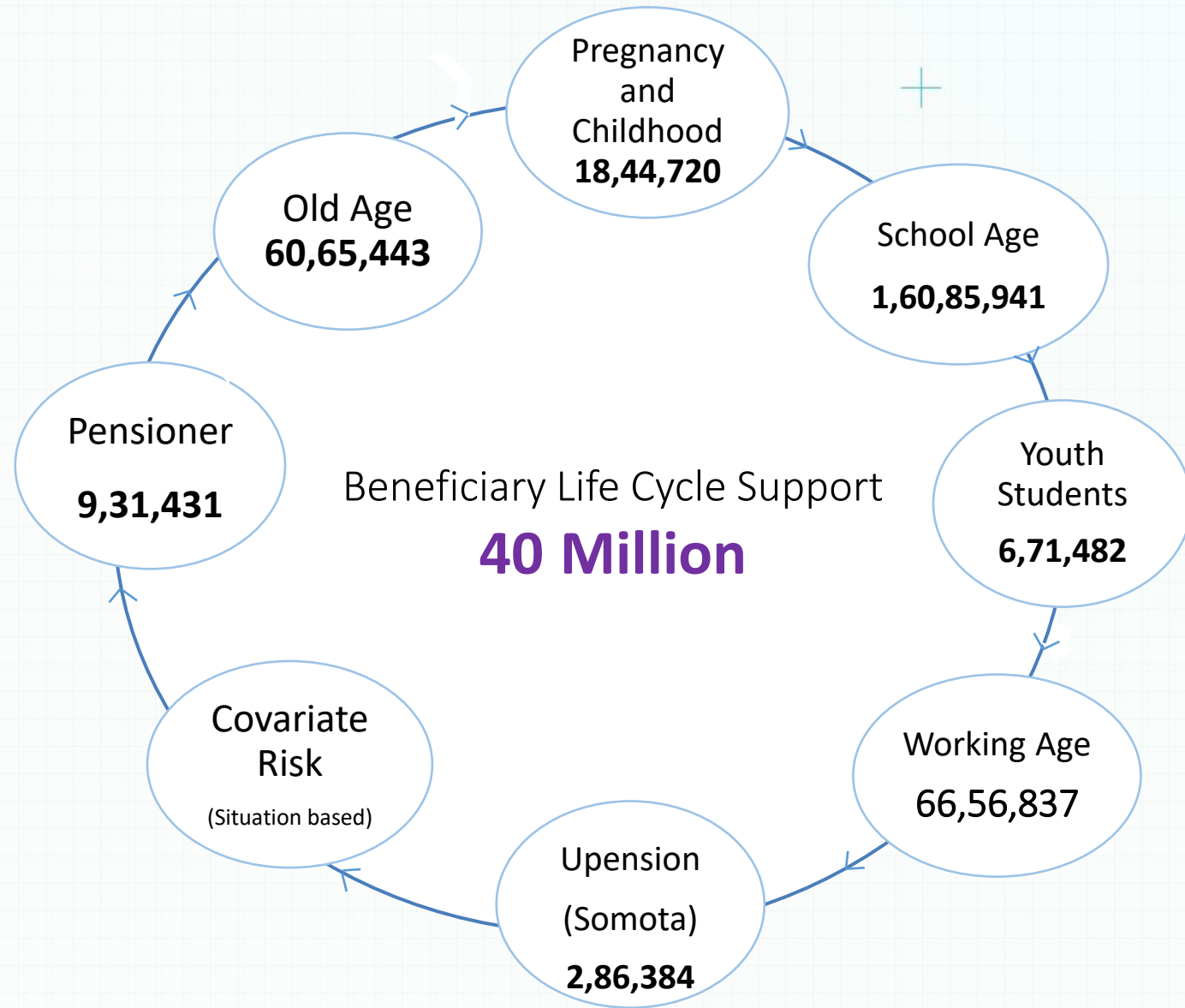
Expenditure in FY 2024-25

G2P Cash Program Budget: **22979.29. crore**

G2P Expenditure: **20491.13 crore**

G2P Paid Beneficiary: **313.95 crore**

G2P Beneficiaries

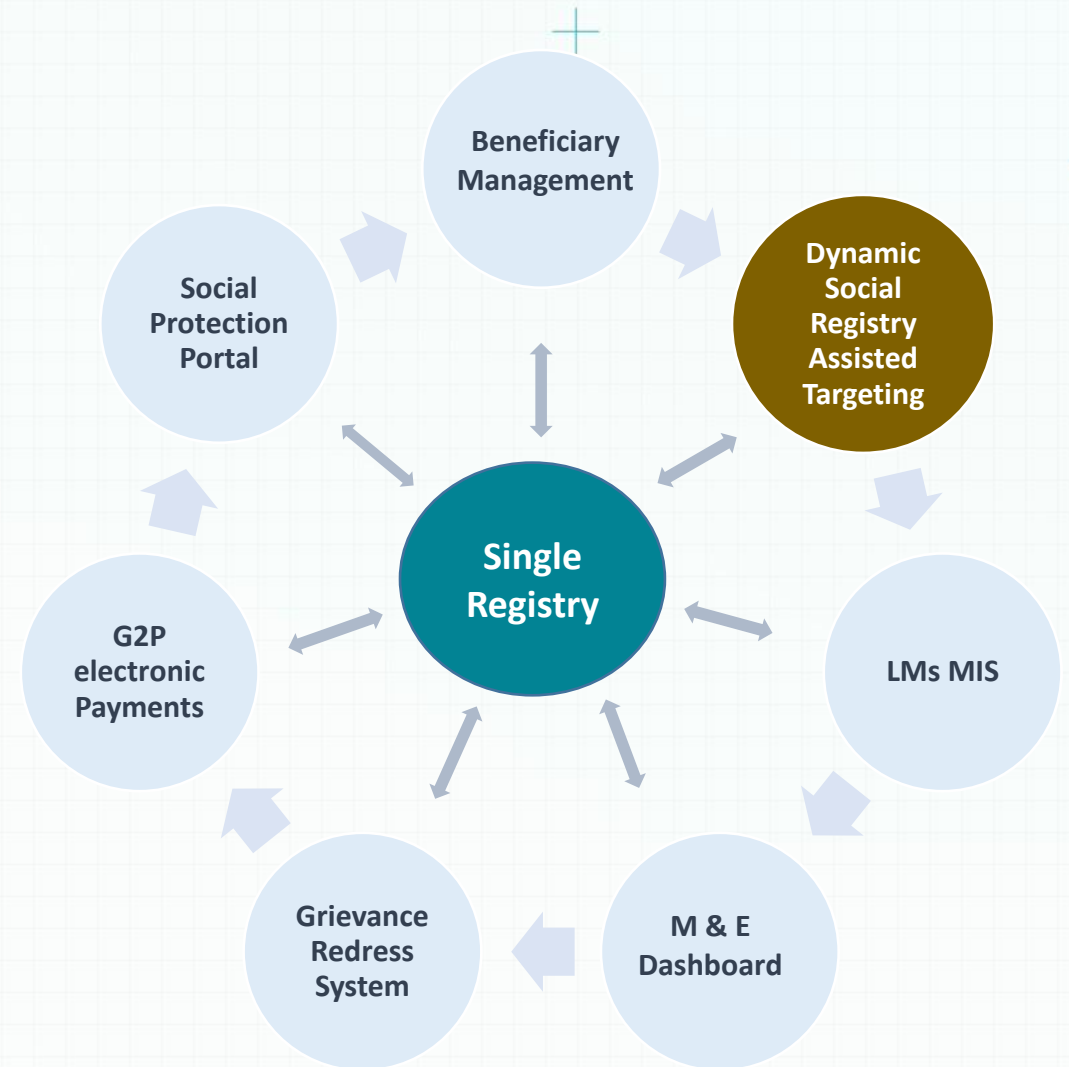


Motivation for Single Registry

- Improve Resource Utilization
- Improve Service Delivery
- Information Support for Policy Decision
- Improve Targeting
- Citizen Engagement to Ensure Transparency

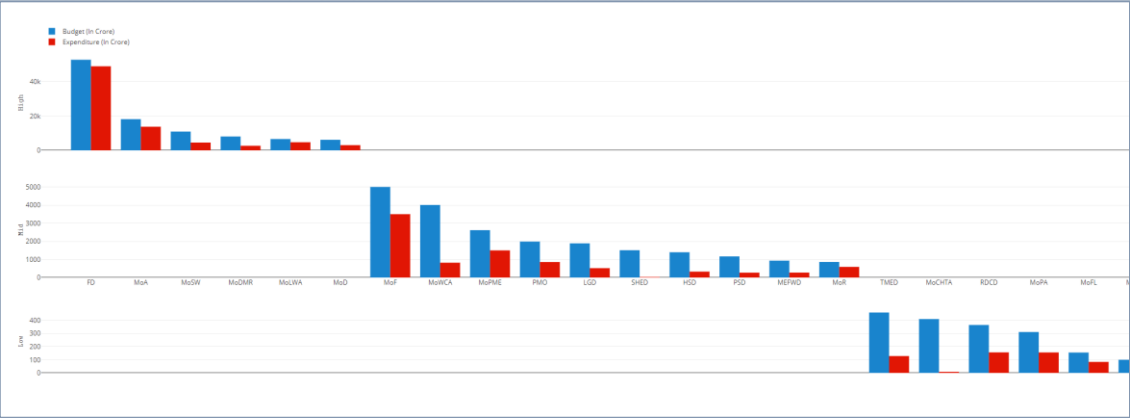
Single Registry System for Social Protection of Bangladesh

- Single Registry, a hub of information on multiple social protection programs
- Consolidation of Social Protection Programs
- Validates information between the social protection MIS and other databases
- Supports Outreach, Enroll, Registration, Payment process and monitoring

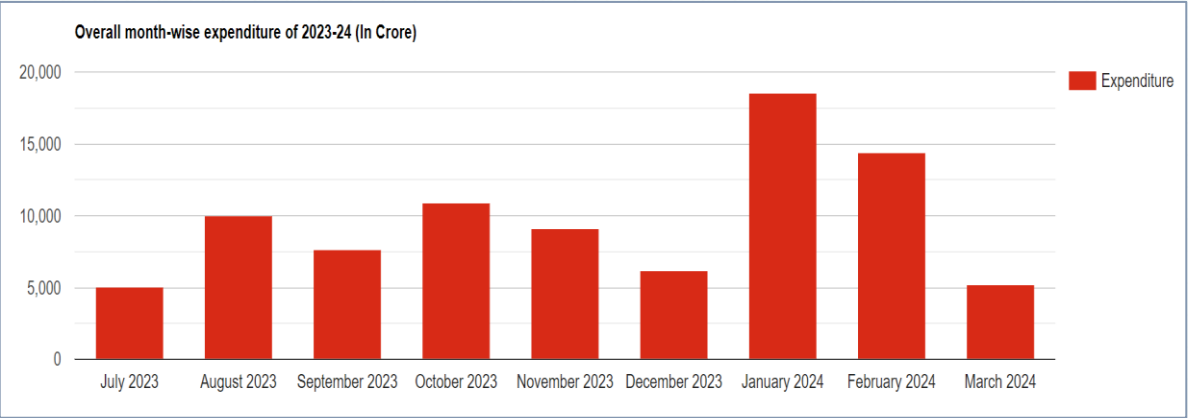


M&E Dashboard

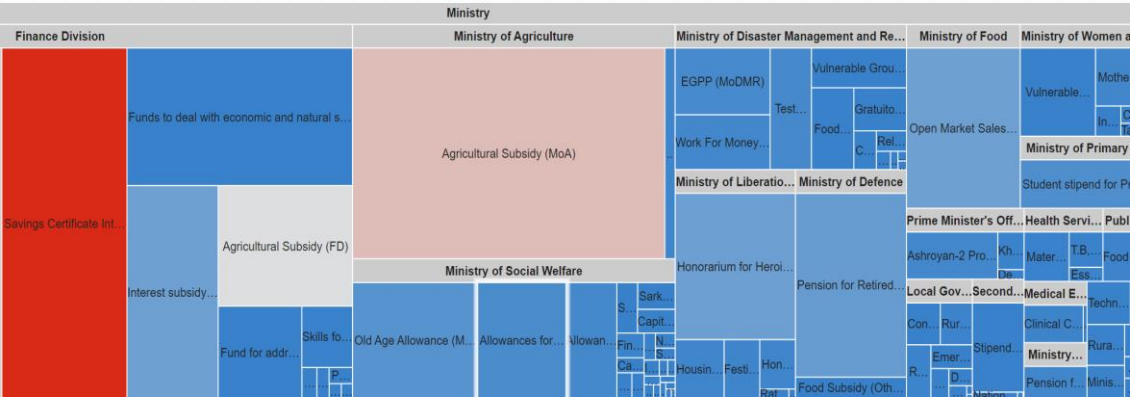
Ministry Wise Budget vs Expenditure



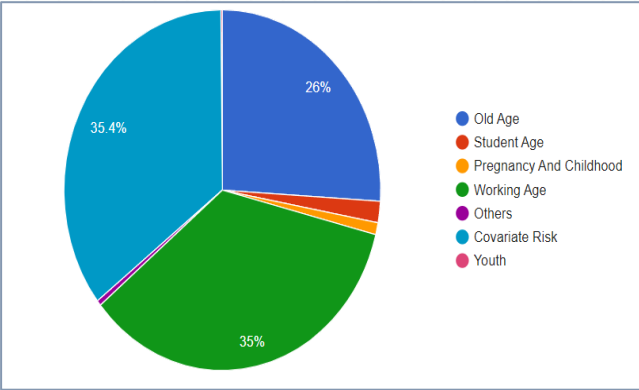
Month-wise Expenditure (in Crore)



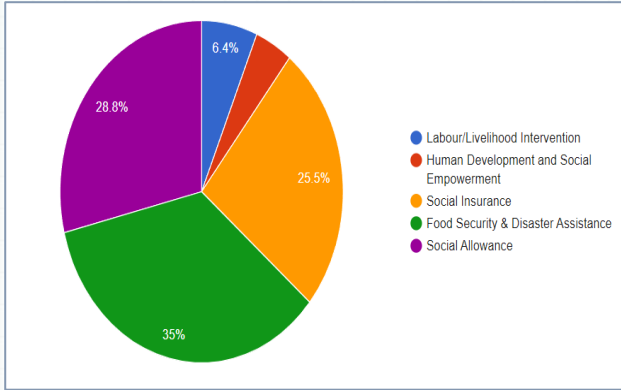
Ministry Wise Tree Map (Budget & Expenditure)



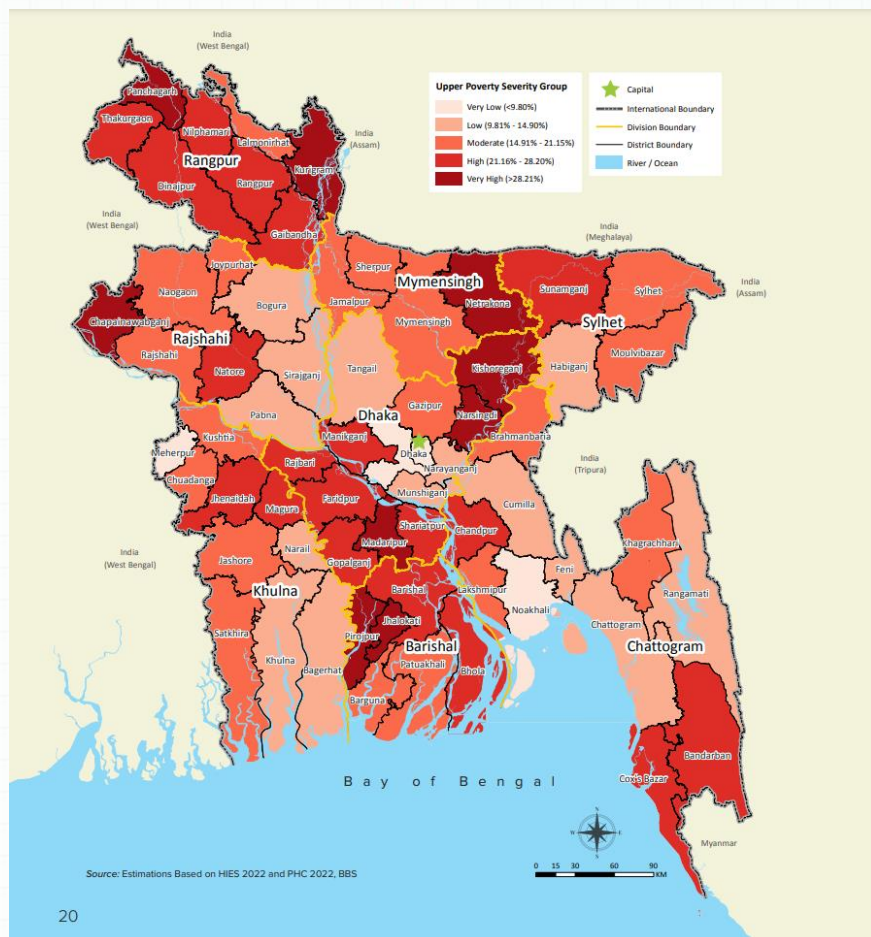
Expenditure by Life Cycle (in Crore)



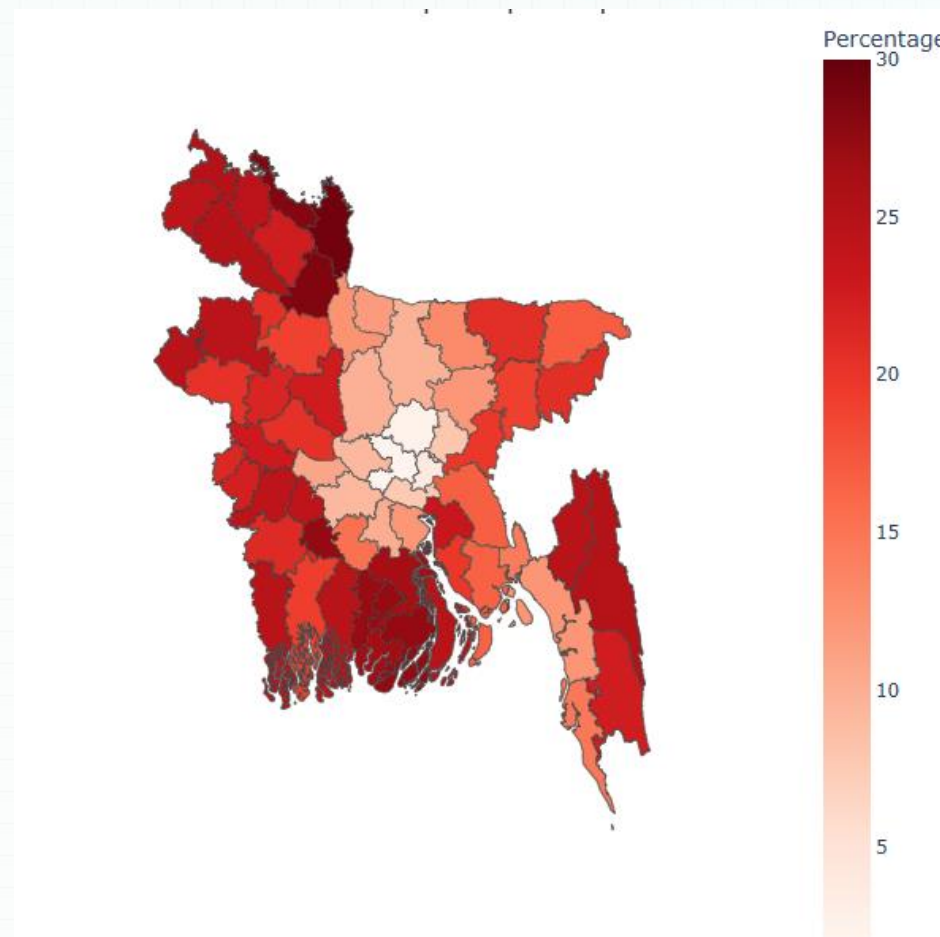
Expenditure by Cluster (in Crore)



G2P Insights from Single Registry

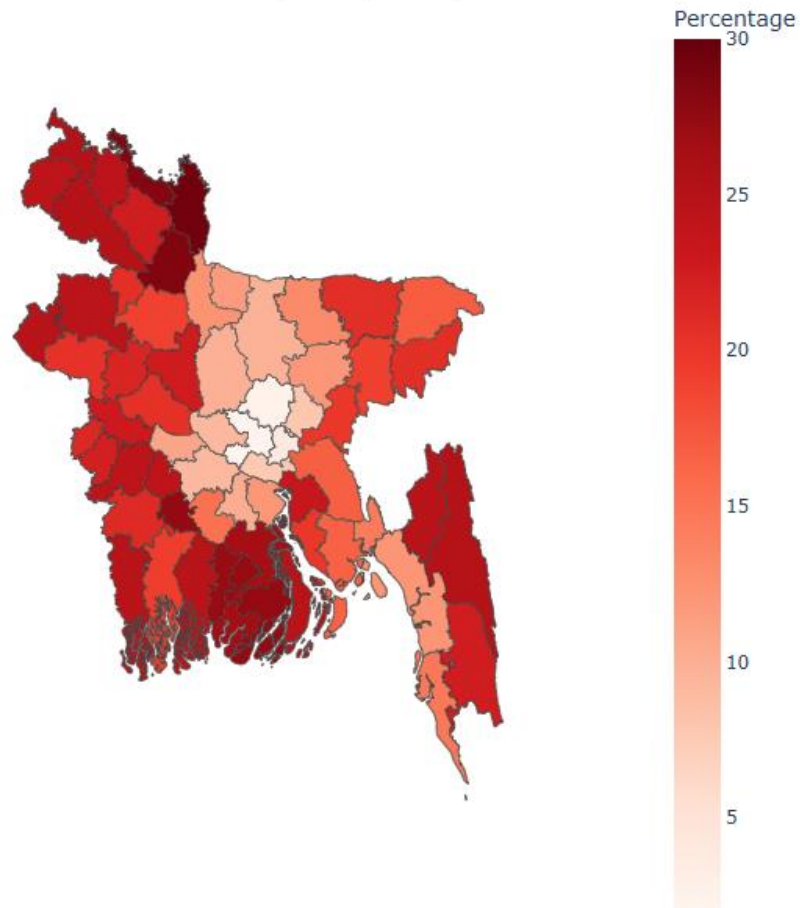


BBS Poverty Mapping



Beneficiary (2.77 crore) Distribution

Beneficiary Population Ratio Distribution



Total Population of Bangladesh

16.98 crore

Total Number of Beneficiary

2.77 crore


Beneficiary Population Ratio
Ranges from 2.20 % (Dhaka) to
29.35% (Kurigram)

Beneficiary Population ratio distribution for cash-transfer program of 2.77 crore

Social Protection Portal

Social Security Portal of Bangladesh ১৯৭৭

১৯ Login



Programs and Policies

Government Intervention 2024-25

Icon	Program/Policy	Value
Building	Ministry/Bureau	21
Heart	Budget	136003.84 Crores
Banknote	Cash-based Program	22
Banknote	Budget of Cash Program	30087.48 Crores
Gears	Programs	140
Network	Signatories	4270167 Crores
Target	SDG Program	25
Target	SDG Coverage	53.75%
Target	Universal Pension	Total Subscribers: 272,742 648 Contribution to Scheme: 22.85 Crores

Non-Government Intervention

Icon	Organization	Action
Target	International Organization	Details
Target	Non-Government Organization	Details
Target	Private Sector	Details

Program Brief:

Icon	Program	Action
Target	Old Age Allowance	Details
Target	Maternal and Child Program	Details
Target	Homonized Sripada Program	Details
Target	Primary Education Sripada Program	Details
Target	Homonization for Freedom Fighters	Details
Target	Widow and Husband's Deceased Daughter Women Programs	Details

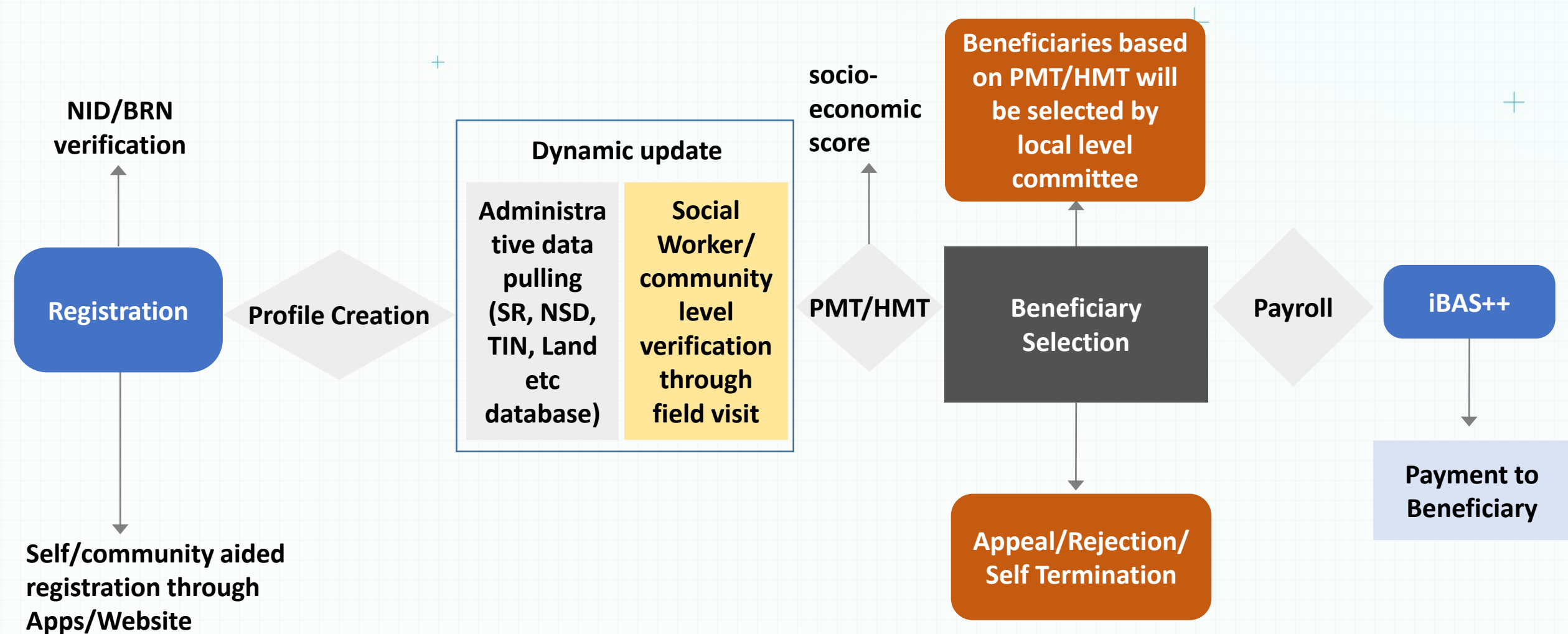
Line Ministries MIS's

Icon	MIS	Action
Target	72GP	View
Target	DSHE	View
Target	DSHE	View
Target	WGP	View
Target	DOL	View
Target	DTG	View
Target	DSG	View
Target	MSU/MA	View
Target	MSGP	View

Dynamic Social Registry

Dynamic Social Registry is a database system that constantly updates individuals or household information to assess their eligibility for social protection programs. It enhances the accuracy of beneficiary selection for Social Protection programs. Dynamic Social Registry incorporate administrative data and other verification method by field visit or other ways of verification.

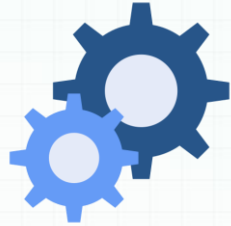
Dynamic Social Registry Process Flow



Advantages of Dynamic Social Registry



Improve Targeting



Better Program Design



Quick response to Shocks



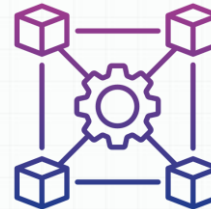
Expand Coverage



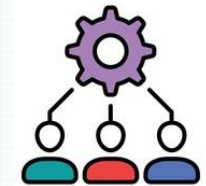
Enhanced Transparency



Real-time Updates



Data Interoperability



Improve Resource Allocation

Probable use of Administrative data for Dynamic Update



Birth Registration System



National ID System



National Saving Certificate



TIN Information



Employee database (Govt. and Private)



Universal Pension System



MPO Farmer's Card



Remittance Information



Land System



Electricity Consumption

Other Agency's API Connectivity Status

Verification API	Applied
MFS Account Existence and status	√
Account Holder NID and Beneficiary NID Matching	√
Verification of Receiver's mobile no registered with his/her NID or not	√
Status of crediting beneficiary account	√
API connectivity with Administrative databases to improve Targeting	X



THANK YOU!

THINK BIG

