



Presentation on

**A Review of Migrant  
Workers Access to Social  
Protection and Proposed  
Strategy for Integrating  
Migrant Workers into  
National Life Cycle  
Framework of Social  
Protection**

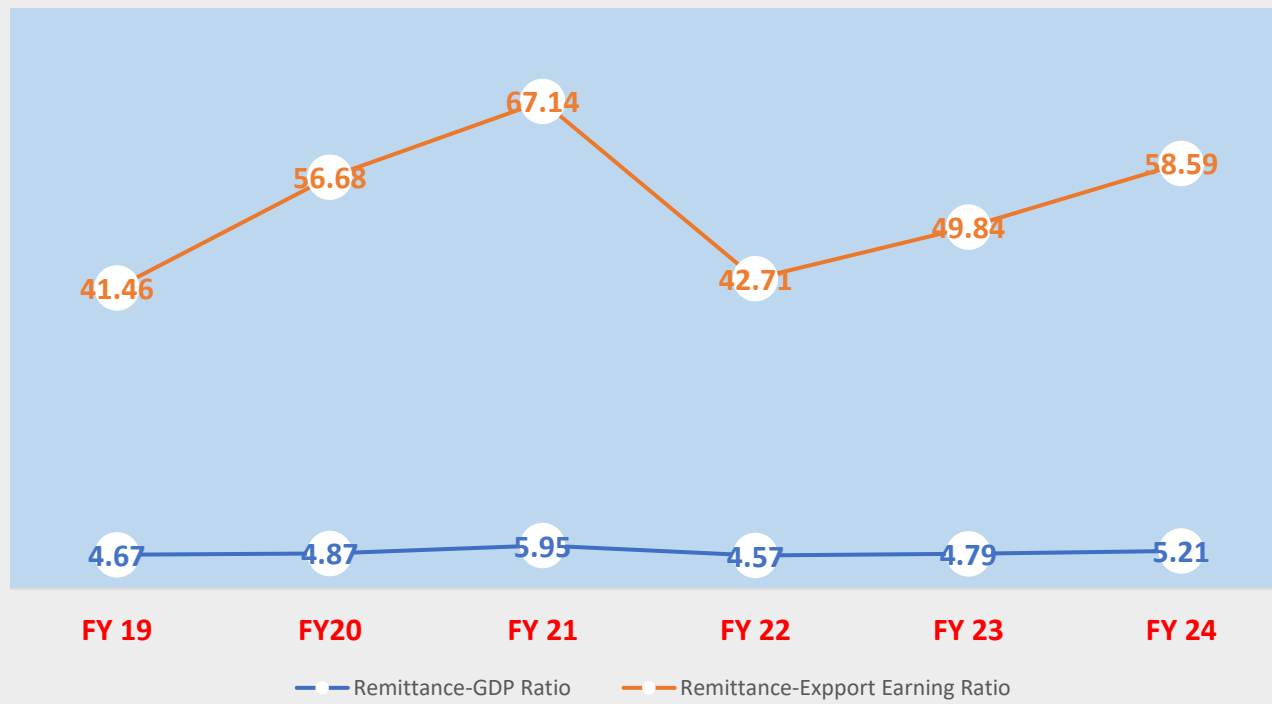
**Rahnuma Salam Khan and  
Fazley Elahi Mahmud**

# Background: Migration Trends



# Background: Remittance Flow

REMITTANCE AS PROPORTION OF GDP AND EXPORT EARNING



# Challenges Faced by Migrant Workers

- **Death of migrant workers cause severe impact on families**
- **Disability caused by workplace accidents**
- **Premature returns**
- **Women migrants face exploitation, under-payment, non-payment and physical and sexual abuse**
- **Many migrant workers' families remain poor**

**To address these challenges, ensuring migrant workers' access to social protection is critically important.**

# Migrant Workers' Right to Social Protection

**Bangladesh Constitution and NSSS: Social protection is right of every deserving citizen.**

**Universal Declaration of Human Rights (1948):**  
Social protection is a human right.

**Recommendation No. 202 (2012):** Universal social protection floors to ensure income security and access to essential services for all

**The Equality of Treatment (Social Security) Convention, 1962 (No. 118),** equality of treatment in relation to social security for national and non-national.

# Migrant Workers' Access to Social Protection in CODs

**In middle-eastern countries, migrant workers' access to social protection is very limited.**

# Review: Migrant Workers Access to Social Protection in Bangladesh

- **Probashi Kormi Bima**
- **Services Provided by Wage Earners' Welfare Board (WEWB)**
- **Universal Pension Scheme (UPS)- Probash package**
- **National social assistance schemes (allowances)**

# Findings: Access to Proashi Kormi Bima

Type of Benefit	No death/Disability /Early Returnees (2024)	Received Benefits Female (2024)	Received Benefits Male (2024)	Received Benefits Total (2024)
Death Benefit	4,813	28	986	1015
Disability Benefit	Not Available	-	-	398
Early Returnee	Not Available	15	369	384

Work Related Injuries in Saudi Arabia 2019

28,825

Deportation/Travel Doc issued- GCC Countries

57,072



# Findings: Universal Pension Scheme (UPS)

- Uptake of the Probash package very low: 910 out of 372,378
- Lack of awareness about the scheme.
- Lack of confidence on return on investment

# Findings :WEWB Services

- **Timely grants and amount to families of deceased migrant workers is commendable**
- **Repatriation of Dead Bodies of Undocumented Workers is Commendable**
- **Scholarships and disability allowances offer predictable support**
- **Children of deceased or disabled migrant workers remain at risk of school dropout**
- **Female early returnee workers require targeted support**

# Findings: Access to National Social Assistance Schemes

## **Risk of exclusion from national social assistance programmes**

- **Misconceptions about economic status of families of migrant workers**
- **PMT and economic indicators do not capture actual status e.g. loans.**

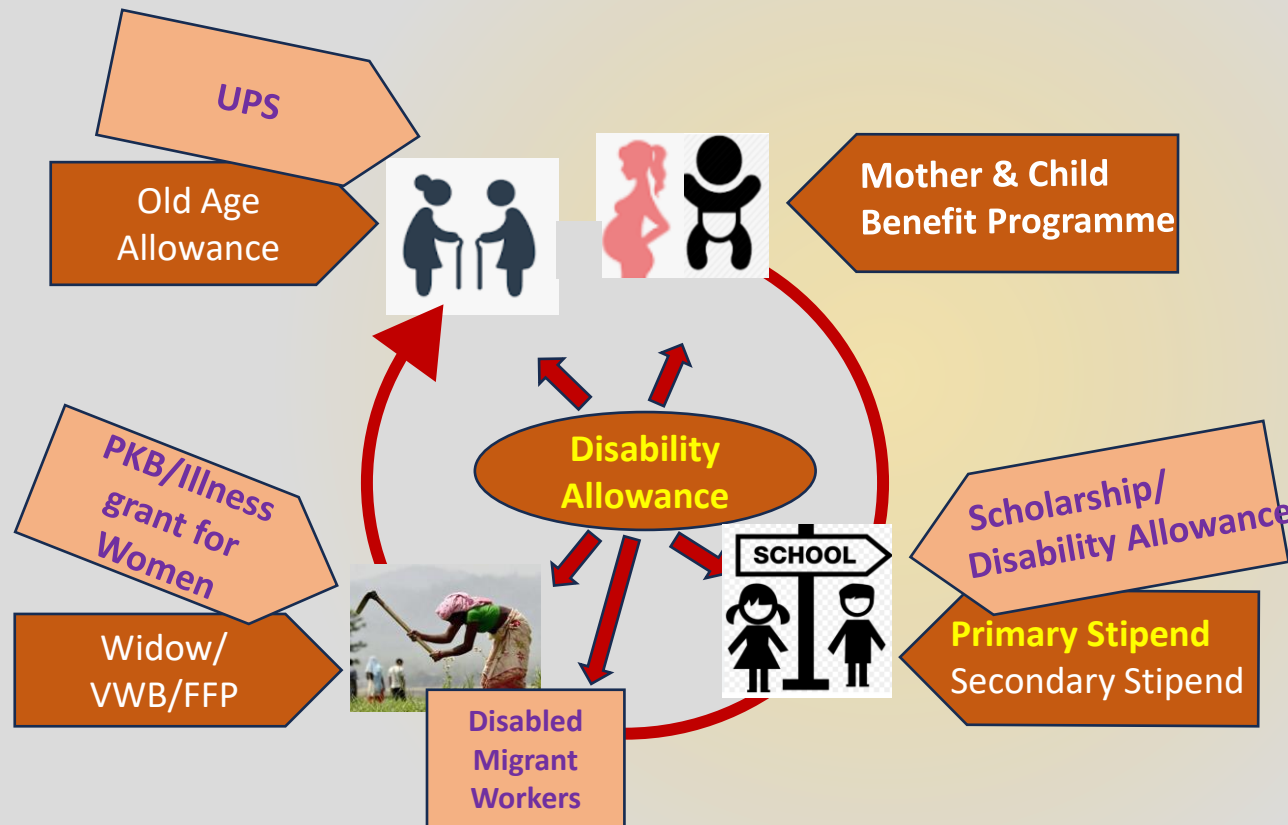
# Recommendations

- 1. Enhance awareness mechanisms of Probashi Kormi Bima and Universal Pension Scheme**
- 2. Introduce Renewal Options for early migrants**
- 3. Consider covering of Undocumented Migrant Workers**
- 4. Consider special support for early returnee women workers**
- 5. Expand scholarships and disability allowance for children of migrant workers**

# Recommendations

6. **Introduce health coverage for migrant workers under UPS, as planned.**
7. **Enable transition to the Samata Package upon return.**
8. **A separate scheme may conflict with the NSSS objective of system consolidation: Fragmentation/Benefit levels/Duplication**
9. **Migrant workers returned with disabilities should access national disability allowance.**
10. **Bring Probashi Kormi Bima, UPS and WEWB Scholarships and disability allowance under national lifecycle framework.**

# Migrant Workers's in the National Life Cycle Framework



- Acknowledge the vulnerabilities in NSSS
- Prioritise migrant workers in social assistance