



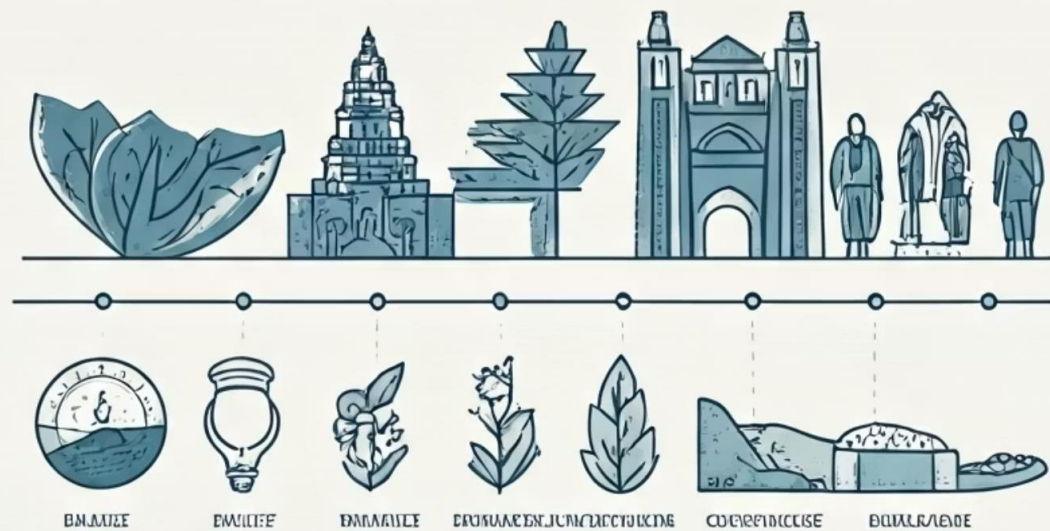
# Guidelines on Adaptive Social Protection (ASP) in Bangladesh

Building a Resilient and Responsive Future

Mohammad Khaled Hasan

Additional Secretary

Cabinet Division



# From Relief to Resilience



## Relief Focus

Traditional disaster response



## NSSS & COVID-19

Need for adaptability revealed



## ASP Guidelines

Strategic integration blueprint

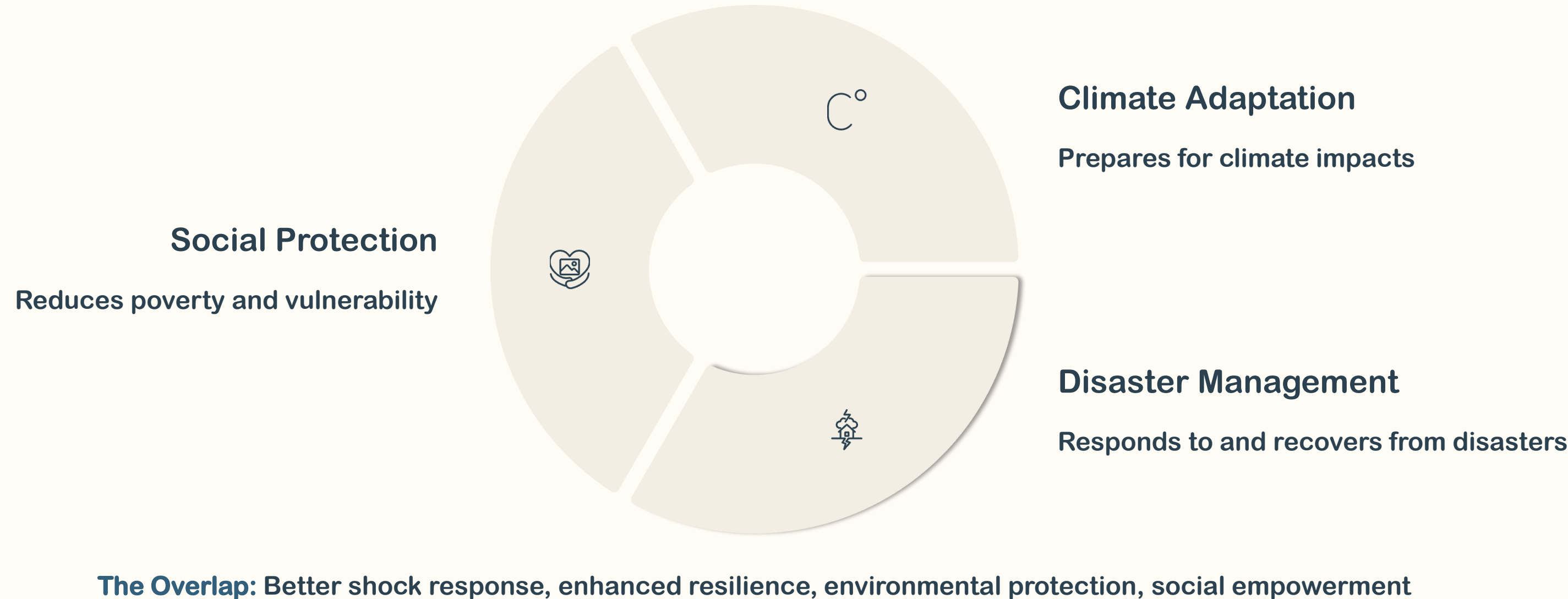
# What is Adaptive Social Protection?

An integrated approach connecting social protection, disaster risk management, and climate change adaptation to build resilience against a wide range of shocks.

**Core Goal:** Create a system that provides safety nets and empowers communities to prepare for, cope with, and adapt to shocks.



# ASP Conceptual Framework



# Why ASP in Bangladesh?



- One of most vulnerable countries to climate change
- Population exposed to economic and health crises
- Traditional systems not rapid or scalable enough
- Shift from reactive to proactive approach



# Policy and Institutional Context

## Constitutional Mandate

- Article 15: Basic necessities and social security
- Article 18A: Environmental protection

## National Strategies

- NSSS 2015: Lifecycle-based social security
- National Adaptation Plan: Climate integration
- Standing Orders on Disaster 2019: Comprehensive framework





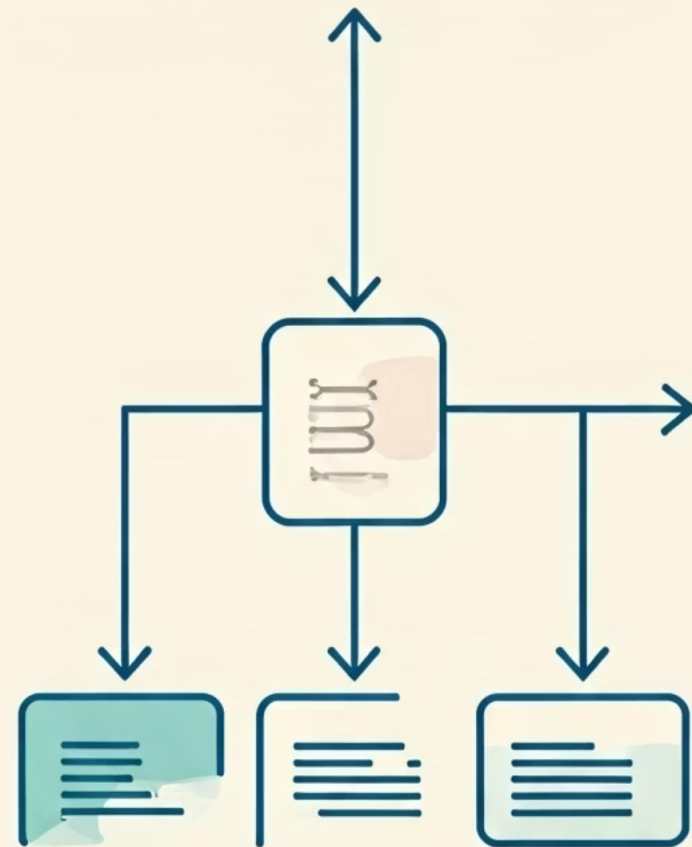
# Core Principles of ASP

## Coordination & Integration

- Breaking down silos between sectors
- Holistic response from national to local level

## Dynamic Data Sharing

- Real-time data exchange for timely decisions
- Harmonized data standards across agencies



# Core Principles (continued)

## Flexible Programming

- Programs that scale quickly in crisis
- Tailored support for diverse communities

## Flexible Funding

- Diverse funding sources and contingency funds
- Rapid resource reallocation during emergencies





# Success Story: COVID-19 Response

## Challenge

Pandemic disproportionately impacted low-income groups

## Initiative

Digital Cash Transfer program launched

## Action

2500 Taka payment to 3.5 million beneficiaries via Mobile Financial Services

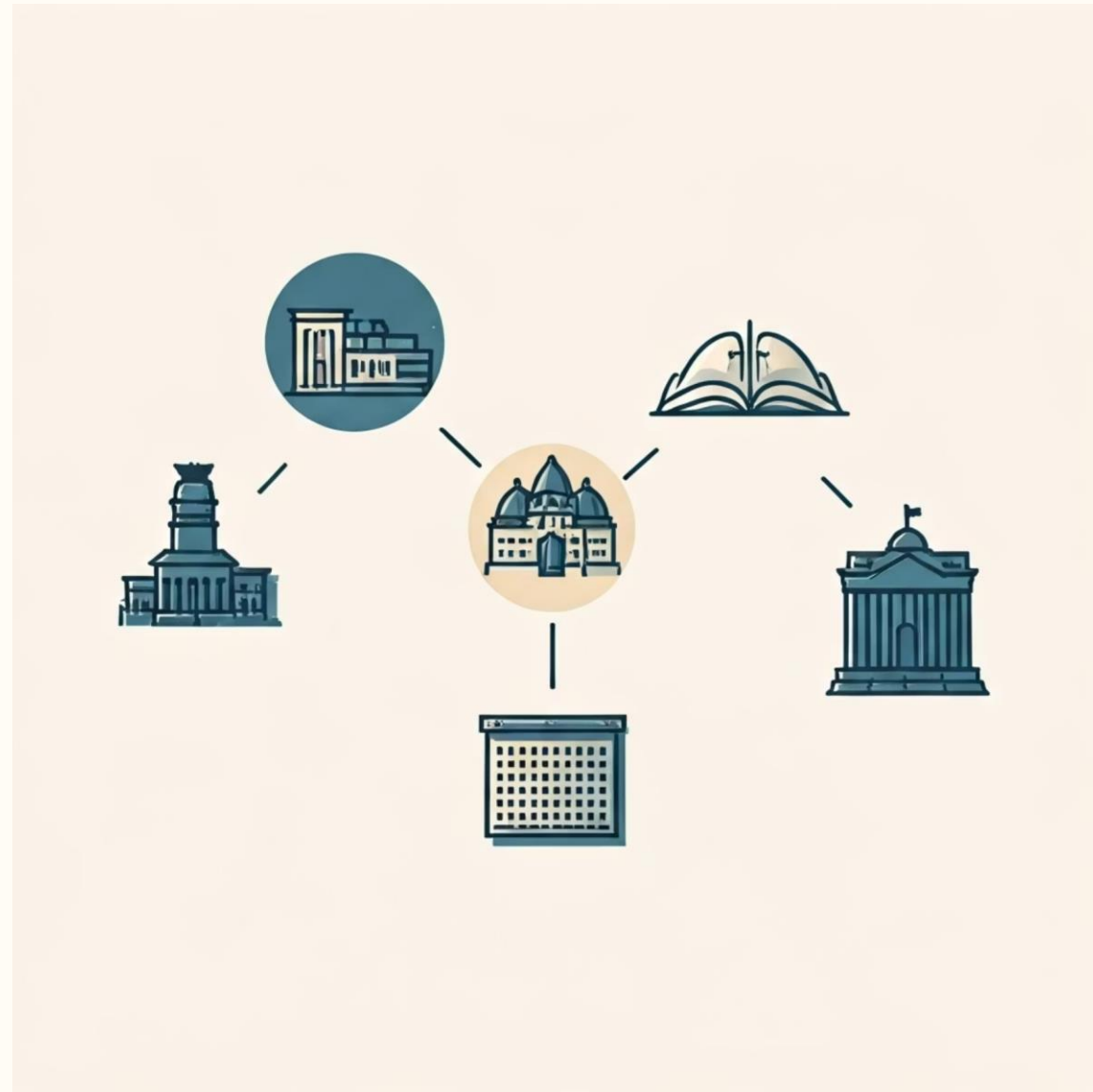
## Innovation

Beneficiary selection using mobile data linked to National ID database

# Strategic Objective 1

## Enhance Multi-Sectoral Coordination

**Goal:** Create seamless, integrated approach across all relevant sectors



### Key Actions:

- Establish Inter-ministerial Committee on ASP
- Strengthen field-level coordination through Social Security Management Committees

# Strategic Objective 2

## Capacity Building

1

### Training for Social Security Focal Points

Comprehensive program for personnel across 39 ministries

2

### Training for Field-Level Chairpersons

Specialized training for Commissioners and Officers who oversee implementation



# Strategic Objective 3

## Readiness & Anticipatory Measures

# Shift from reaction to anticipation



### Information Collection

Assess disaster likelihood through ministry data sharing



### Community Cautioning

Early warning systems and awareness campaigns



### Anticipatory Allowances

Resources provided BEFORE predicted disasters

# Strategic Objective 4

## Evidence-Based ASP Framework



- **Conduct comprehensive study on current ASP state**
- **Formulate tailored ASP model for Bangladesh**
- **Integrate findings into NSSS 2026**



# Strategic Objective 5

## Novel Data Strategy for Beneficiary Selection



**Big Data**

Mobile usage patterns



**Satellite Imagery**

Geographic vulnerability



**Transaction Data**

Economic activity patterns

Dynamic, real-time understanding of vulnerability aligned with "Smart Bangladesh" vision

# Strategic Objective 6

## Gender Inclusiveness

**Goal:** Address unique vulnerabilities faced by women during climate events and disasters

**Key Actions:**

- Prioritize poor and distressed women in targeting
- Implement special programs for women's security and empowerment



# Strategic Objective 7

## Child-Sensitive Social Protection

### Prioritization

Families with children face higher poverty rates and need targeted support

### Crisis Support

Emergency childcare, educational continuity, and psychological assistance



# Strategic Objective 8

## Disability-Inclusive Social Protection



**Goal:** Ensure one of society's most vulnerable groups is not left behind

**Key Actions:**

- Prioritize persons with disabilities in targeting
- Provide accessible shelters and specialized relief



# Strategic Objective 9

## Enhancing Climate Preservation

### Environmental Workfare

Engage beneficiaries in tree planting and ecosystem restoration

### Environmental Scrutiny

Promote eco-conscious planning in small-scale projects like rural roads



# Strategic Objective 10

## Community Engagement

**Goal:** Ensure ASP programs align with actual local needs

### Key Actions:

- Actively engage communities in planning and execution
- Collaborate with NGOs for grassroots expertise





# The Way Forward



Cross-sectoral collaboration



Data-driven design



Commitment to inclusion



Continuous monitoring



# Questions?



An abstract graphic on the left side of the slide, featuring a series of horizontal, wavy bands in shades of teal and gold, creating a sense of movement and depth.

**Thank You**