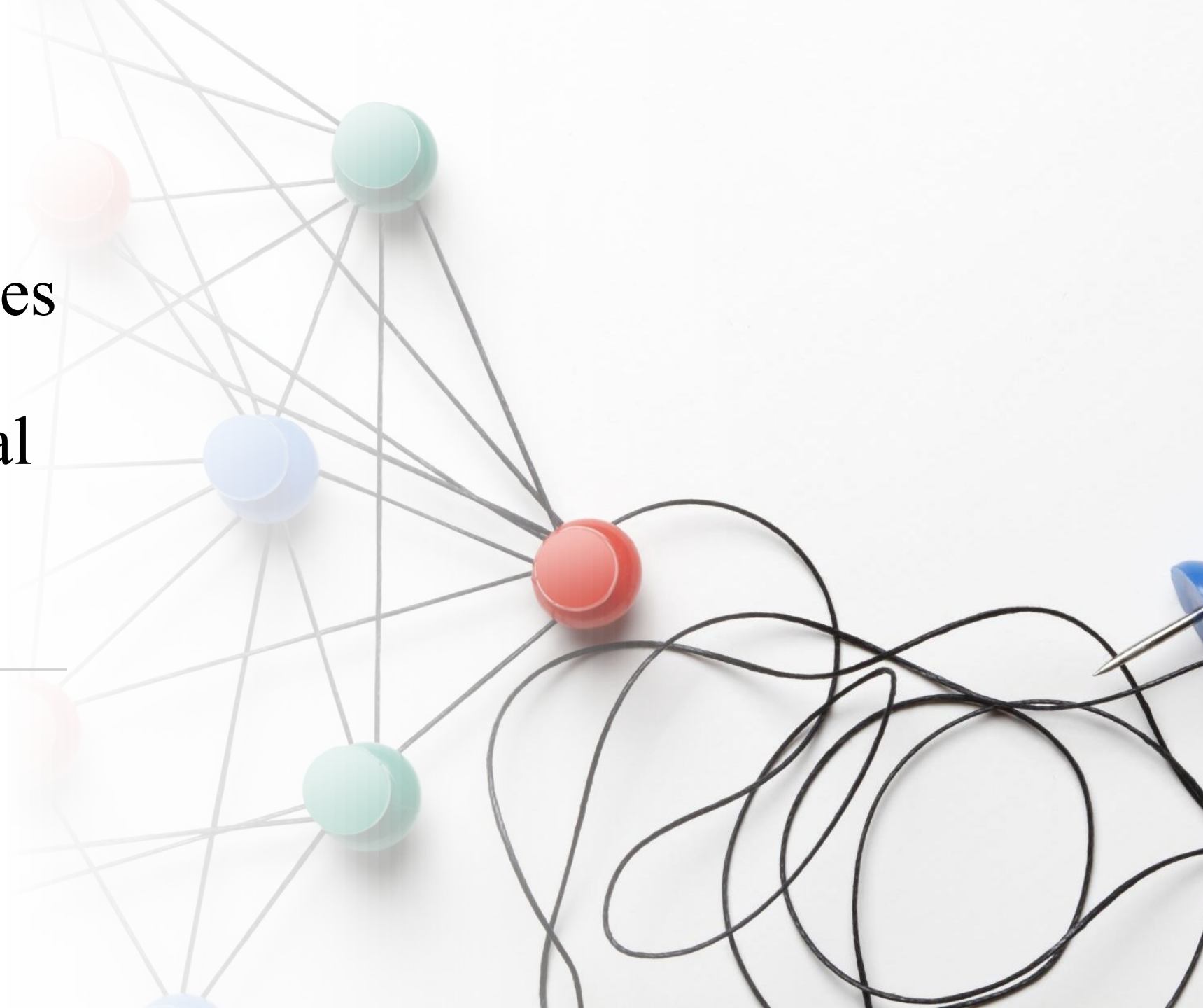
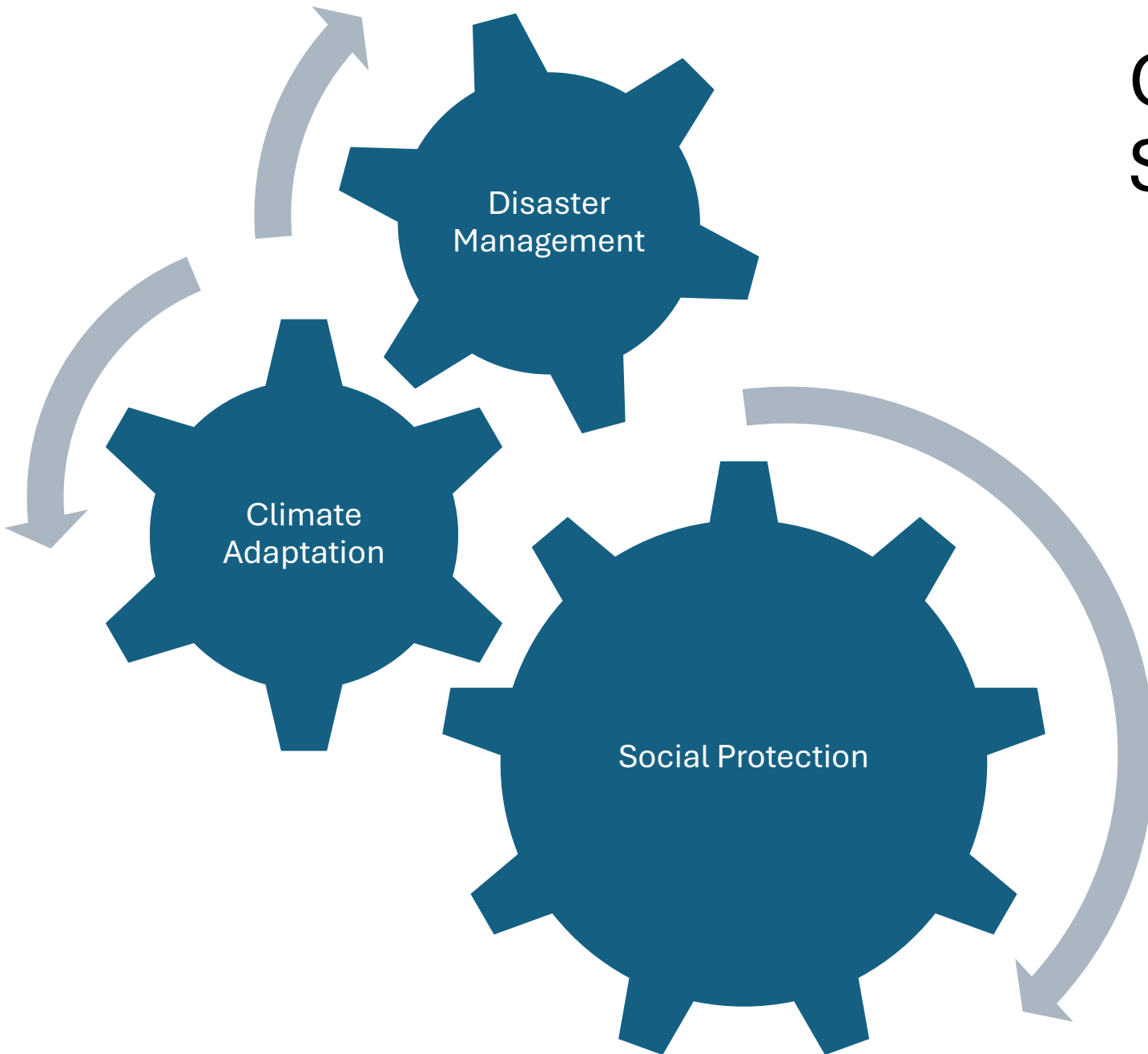


Strategic Guidelines and Action Plans for Adaptive Social Protection in Bangladesh

Mohammad Khaled Hasan
Joint Secretary
Cabinet Division



Concept of Adaptive Social Protection (ASP)

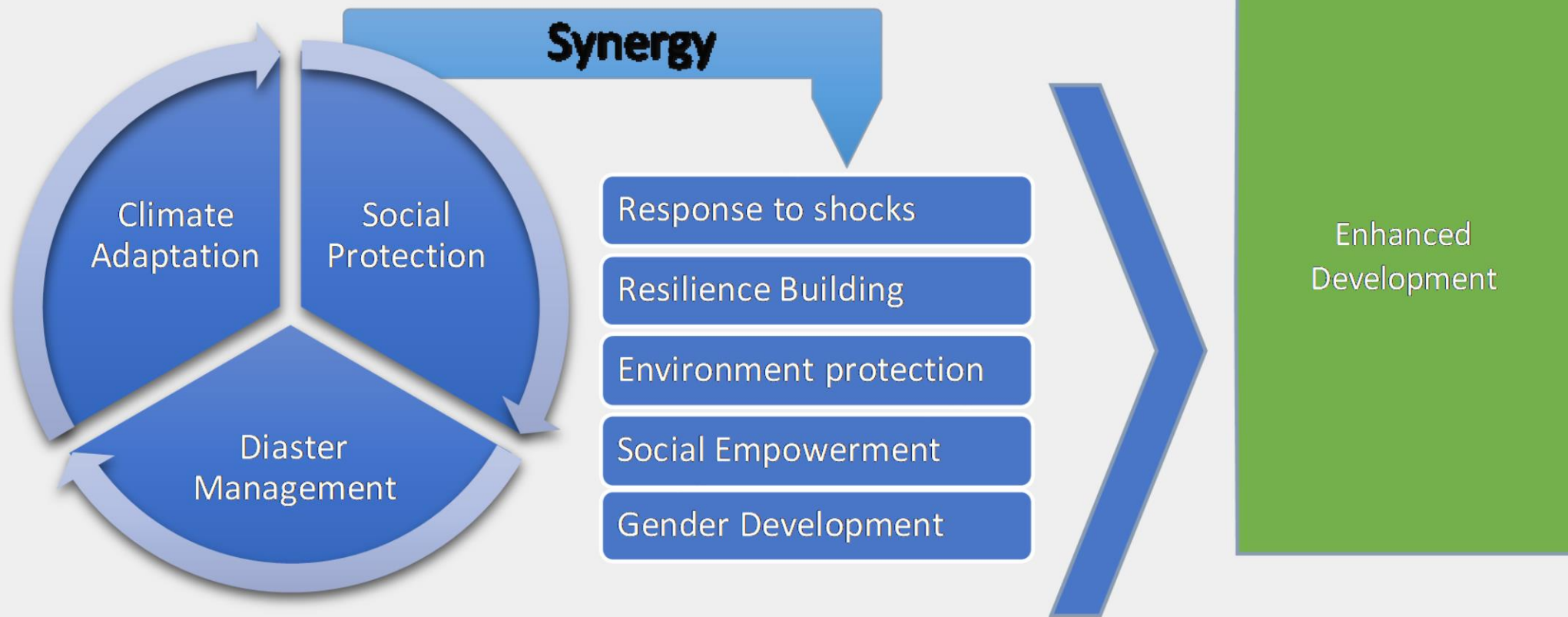


Adaptive Social Protection (ASP) is a comprehensive approach that integrates social protection, disaster risk reduction, and climate change adaptation to build resilience among the most vulnerable populations.

ASP's Core Objective

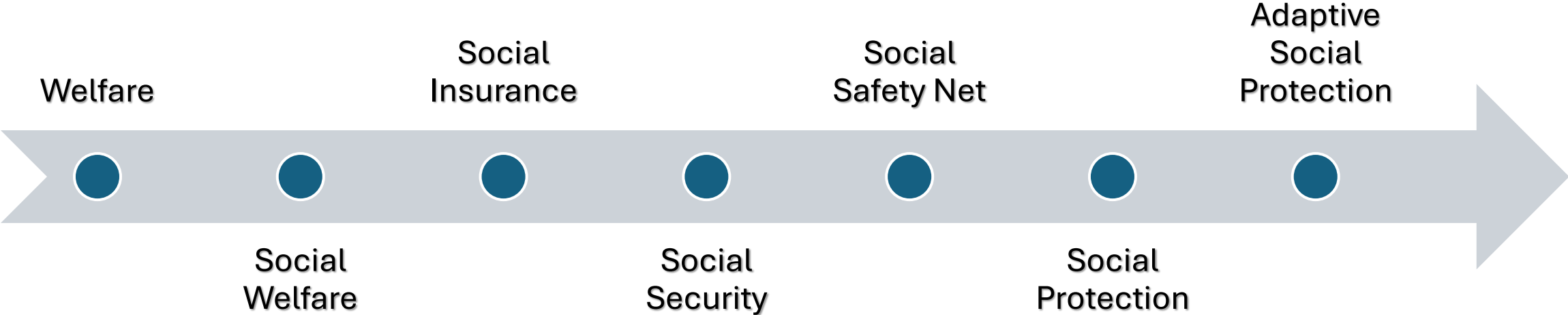
- ASP's core objective is to ensure sustainable and long-term resilience, fostering synergy between different protective and adaptive practices while addressing institutional and coordination challenges.
- It aims to equip these groups with the tools and resources needed to effectively prepare for, cope with, and adapt to various large-scale shocks, including natural disasters, economic crises, pandemics, conflict, and forced displacement.

Conceptual Framework



Evolution towards Adaptive Social Protection

First Wave of SP	Second Wave	Third Wave - Intersectoral
Ancient time - 1601	1890	2019



Poverty	Labour Welfare	Comprehensive
---------	----------------	---------------

The Guideline

- Formulated in December 2023
- A roadmap to promote shock responsive adaptive social protection in Bangladesh
- Not any fundamental policy; combination of already existing policies

Principles of Adaptive Social Protection

- The guidelines are built on principles of
 - inclusivity,
 - responsiveness,
 - sustainability, and
 - adaptability,
- With a focus on
 - enhancing coordination across sectors,
 - building capacities,
 - ensuring sustainable funding, and
 - establishing effective M&E.

Adapt to Shocks



Strategic Objectives and Actions

- Enhance Multi-Sectoral Coordination
- Capacity Building
- Readiness and Anticipatory Measures
- Conduct Studies on ASP Situation
- Novel Data Strategy for Beneficiary Selection
- Gender Inclusiveness
- Child Sensitive Social Protection
- Disability Inclusive Social Protection
- Enhancing Climate Preservation and Forestation
- Community Engagement
- Food and Nutrition Security



Discussion on Way Forward



Thank you