

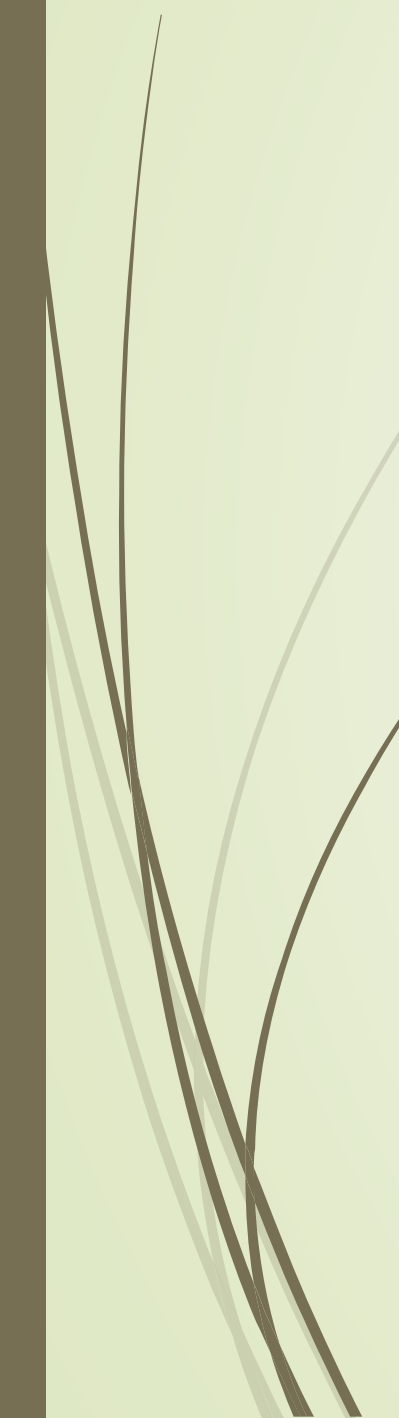
Food Security & Disaster Response Cluster

Presented by
Ministry of Food





Outline of the Presentation

- Introduction to the Cluster
 - Vision & Mission
 - Objectives
 - Food Security & Disaster Response
 - Action Plan Highlights
 - Building Resilience
 - Implementation Challenges
 - Recommendations for a Resilient Future
- 

Vision

Ensure uninterrupted food security and emergency supports for all Bangladeshis.

Mission

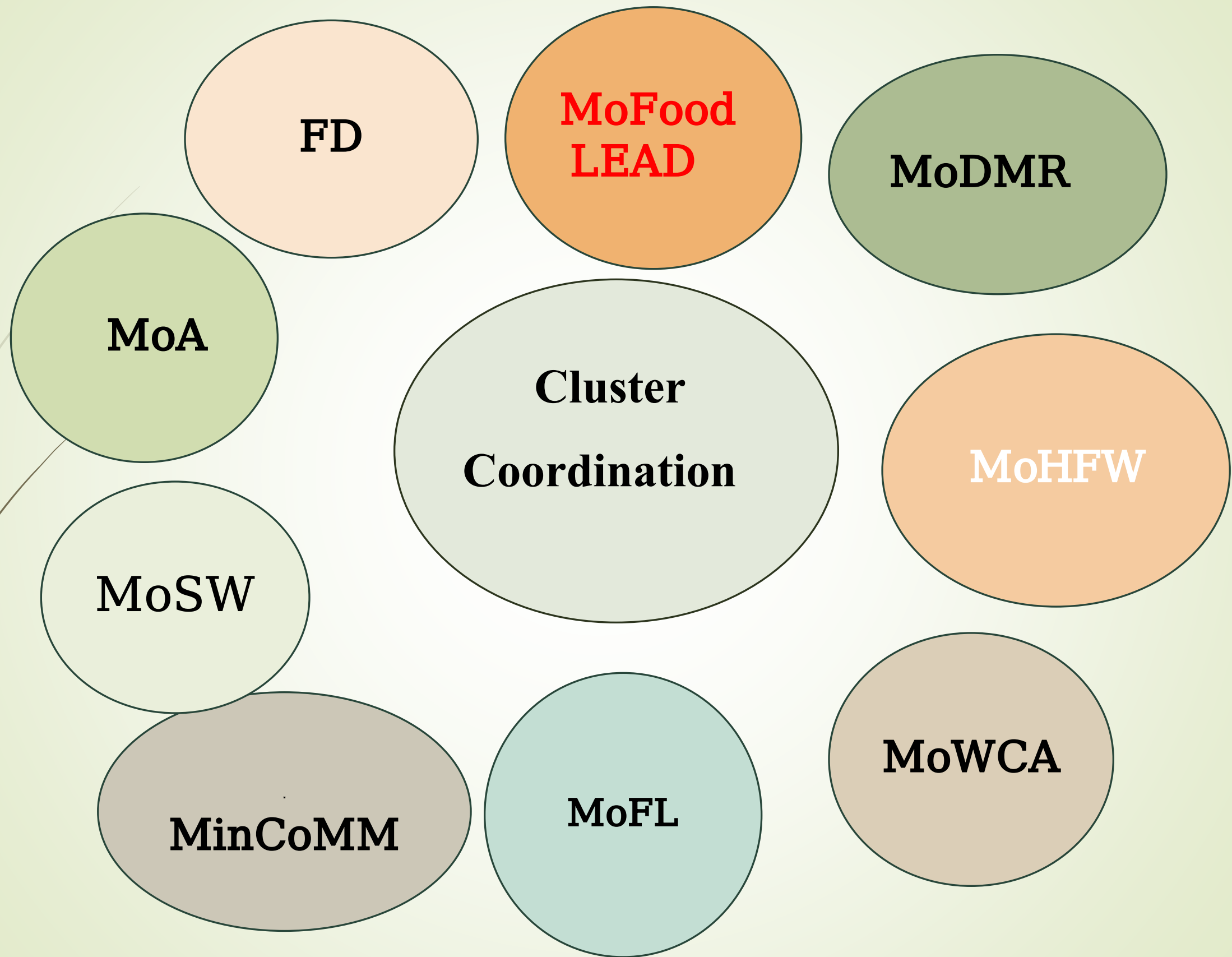
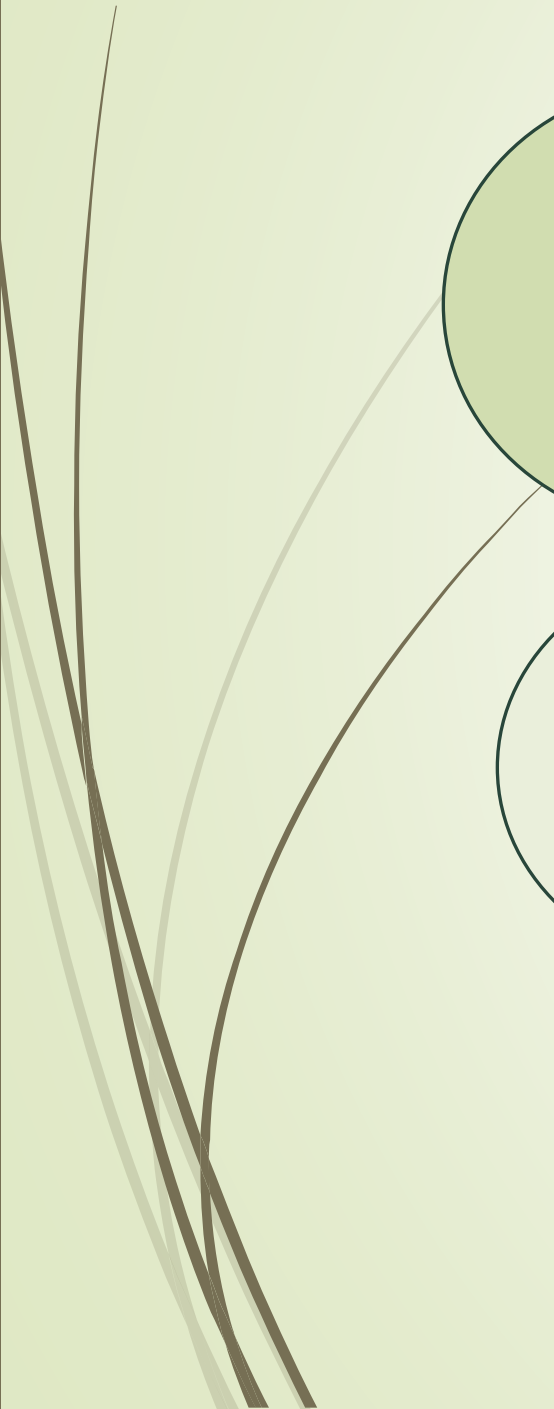
Supply food grains or financial supports to the poor and vulnerable including people affected by disaster and price shocks



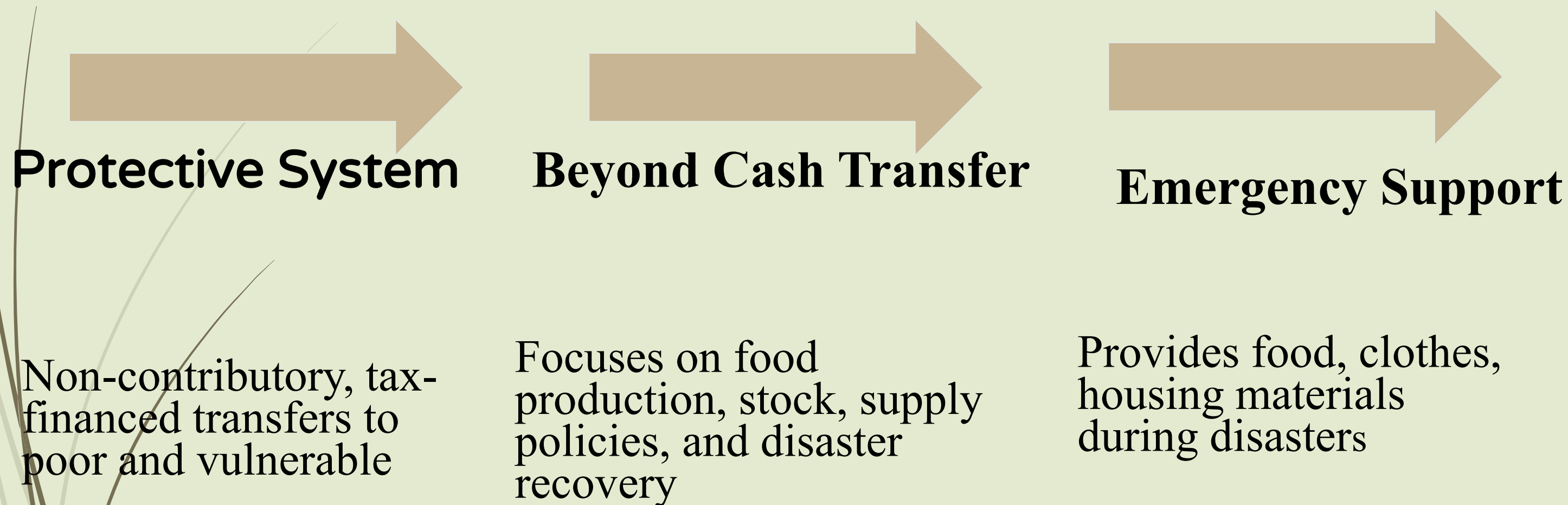


Objectives

- ☐ Set up an efficient shock responsive social security system that ensures food security and meets the need of disaster-affected people
- ☐ Simplify the management intend to improve efficiency and effectiveness of the social safety net programs
- ☐ Ensure mutual cooperation and coordination of action plans of cluster ministries for reform or merger of programs with the aim of restructuring social safety nets



What is Food Security & Disaster Response?



Distinctive Characteristics

Food security is achieved when people have physical and economic access to sufficient, safe, and nutritious food.



Beyond Emergency Response

Includes preventive measures for food production and stock management



Multiple Transfer Mechanisms

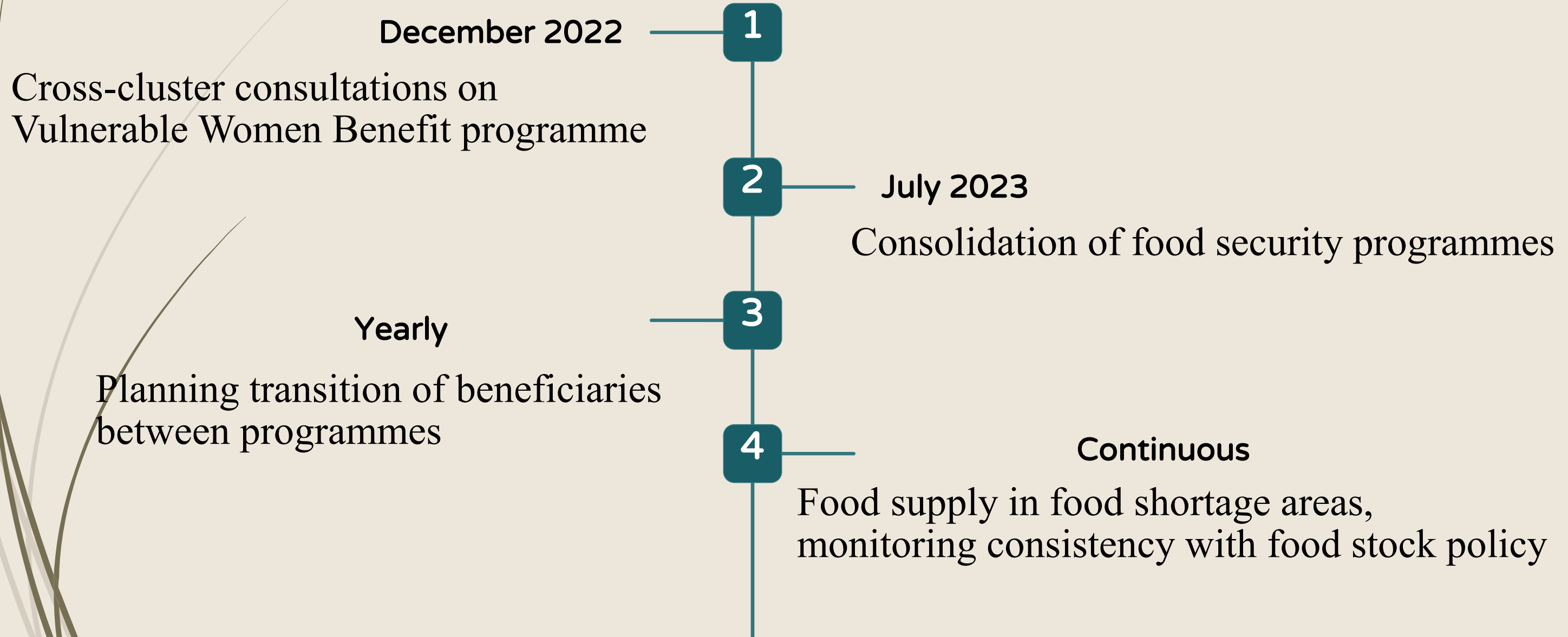
Food transfers, price subsidies, and cash support



Excludes Conditional Support

Does not include workfare programmes requiring labour

Action Plan Highlights



Building Resilience

01 Regular cluster meetings and coordination

02 Inter-cluster consultations for overlapping issues


03 Consistent monitoring of programme effectiveness

04 Transition planning for beneficiaries




Implementation Challenges


Inter-Agency Coordination

-  Harmonising efforts across ten ministries and numerous NGOs is complex, often leading to duplicated efforts or gaps in service.


Resource Mobilisation

-  Securing consistent funding and logistical resources for both proactive measures and rapid disaster response remains a persistent challenge.

Climate Change Impacts

-  Increasing frequency and intensity of natural disasters due to climate change strains existing food security and response systems.

Last-Mile Accessibility

-  Reaching vulnerable populations in remote, rural, or disaster-stricken areas presents significant logistical hurdles for timely aid delivery.



Recommendations for a Resilient Future



Enhanced Inter-Agency Coordination

Establish clear communication protocols and joint operational frameworks across all ministries and partner organisations.



Diversified Resource Mobilisation

Explore sustainable funding mechanisms, including international partnerships & innovative local contributions, to ensure long-term stability.



Climate-Adaptive Strategies

Integrate climate change resilience into all food security and disaster response planning, focusing on early warning systems and adaptive agriculture.



Optimised Last-Mile Accessibility

Invest in robust logistical infrastructure and innovative delivery methods to ensure timely and effective aid reaches all vulnerable populations, regardless of remoteness.

Questions ?
Comments ?



THANK YOU