

SPFMS



iBAS⁺⁺

SPBMU MIS-The Single Registry System of Social Protection in Bangladesh

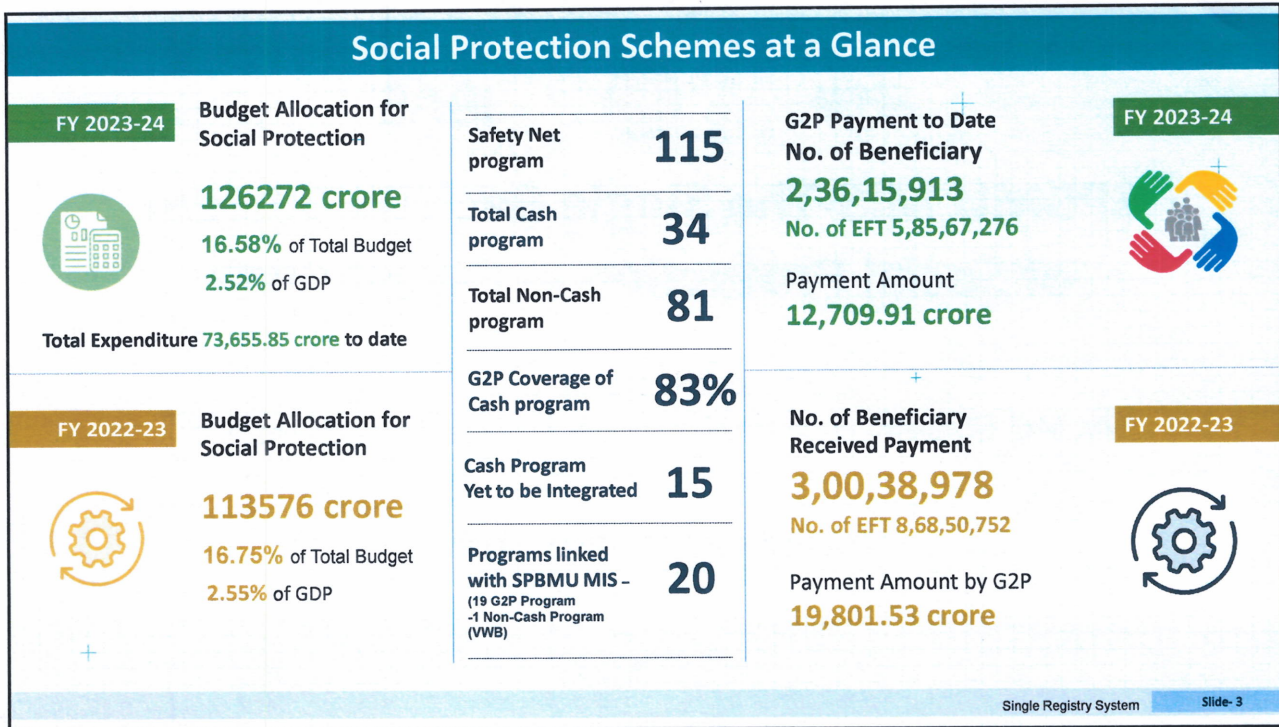
Kind Presence of:

Mr. Md. Mahbub Hossain, Cabinet Secretary, Cabinet Division

iBAS⁺⁺ Scheme, SPFMS, Finance Division



Date : 17 April 2024 | Venue : Cabinet Division



Current MISs Integrated with Single Registry System

Maintain by iBAS++		
SL	Ministry/Division	MISs
1	Secondary and Higher Secondary Education Division	HSP MIS
2		DSHE MIS
3	Technical and Madrasah Education Division	DME MIS
4		DTE MIS
5	Primary and Mass Education Ministry	PESP MIS
6	Ministry of Labor and Employment	DOL MIS
7	Finance Division	SPBMU MIS

Maintain by other Line Ministries		
SL	Ministry/Division	MISs
8	Ministry of Social Welfare	DSS MIS (07 Programs)
9	Ministry of Liberation War Affairs	MoWLA MIS
10	Ministry of Women and Children Affairs	DWA MIS

EGPP and EGPP+ Programs need to develop MIS

+
Single Registry System
Slide- 4

G2P Program List

Serial	Ministry	FD Program/Scheme
1	MoSW	Old Age Allowance
2	MoSW	Allowances for the Widow, Deserted and Destitute Women
3	MoSW	Allowances for the Financially Insolvent Disabled
4	MoSW	Program for Improving the Livelihood of Transgender, Bede and Disadvantaged Community
5	MoWCA	Mother and Child Benefit Program
6	MoLWA	Honorarium for Heroic Freedom Fighters
7	MOLWA	Festival, Victory day and Bangla new year for Heroic Freedom Fighter
8	FD	Pension for Retired Government Employees and their Families
9	MODMR	EGPP
10	MoPME	Student stipend for Primary education level
11	SHED & TMED	Stipends for secondary, higher secondary and madrasah education level students
12	SHED	Stipends for undergraduate and postgraduate level students
13	TMED	Stipends for students of technical education institutions
14	MoSW	Stipends for Physically Challenged Students
15	MoSW	Stipend for Improving the Livelihood of Transgender, Bede and Disadvantaged Community
16	MoLE	Assistance for unemployed workers in the export-oriented garment and footwear industry due to Corona Pandemic
17	MoSW	Improving the living standards of tea workers
18	SHED	Special grants for teachers and students of educational institutions
19	MoWCA	Increasing the adaptability of coastal communities, especially women, to tackle salinity caused by climate change

Single Registry System

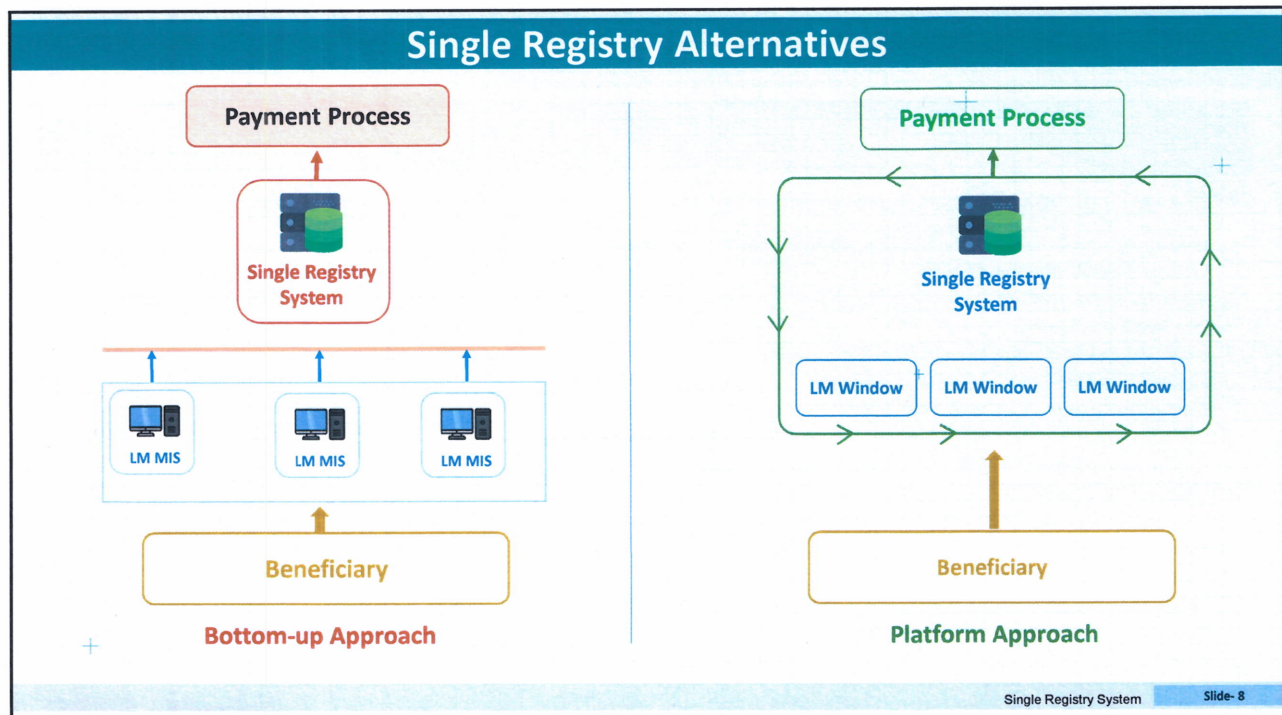
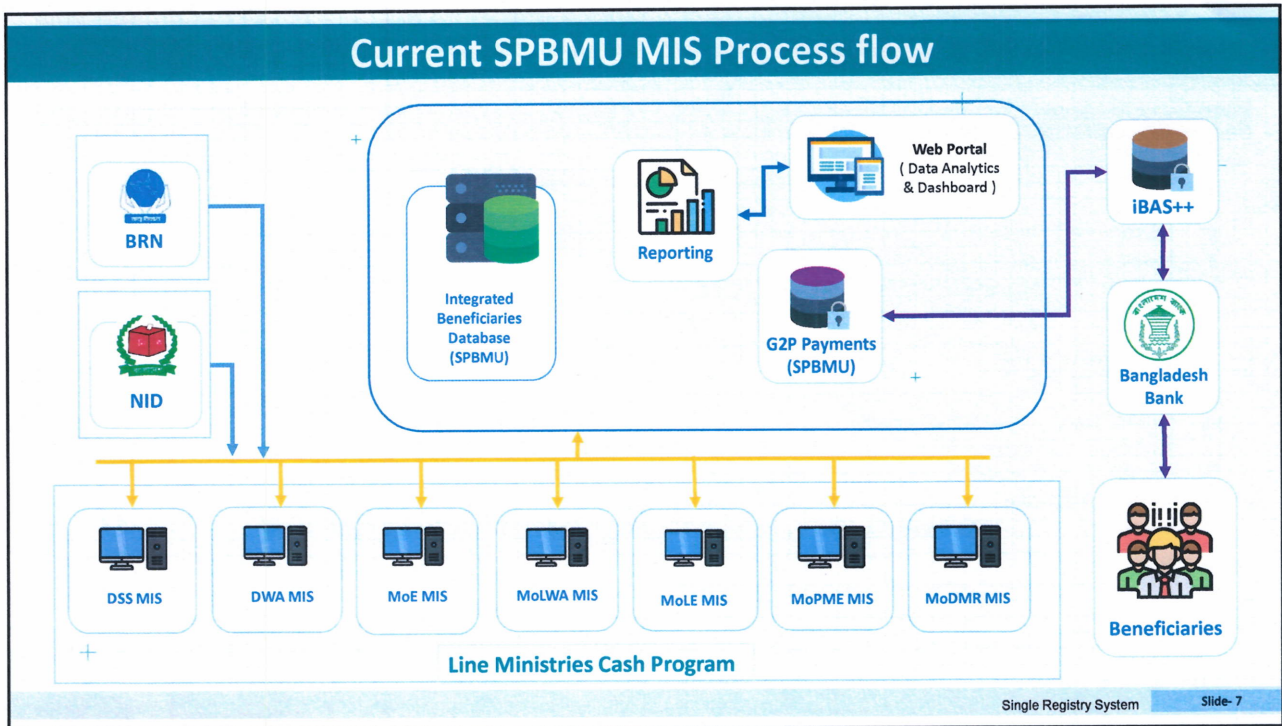
Slide- 5

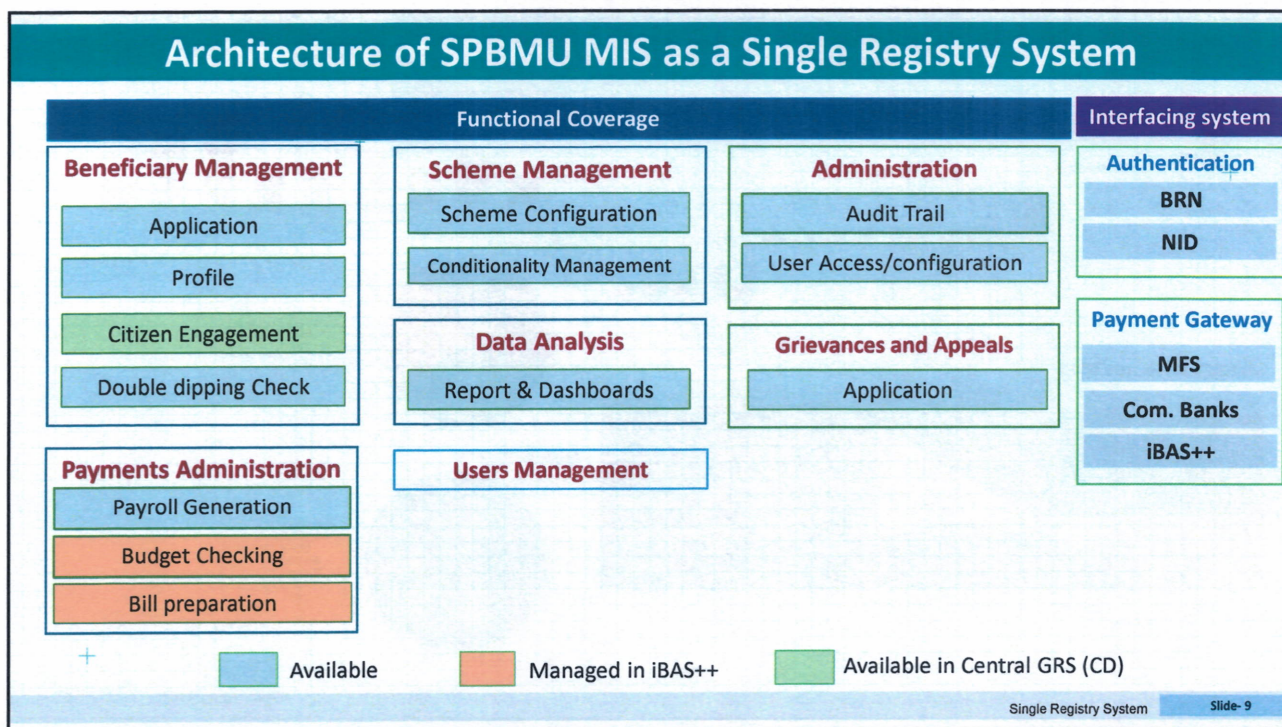
Scheme yet to be Integrated with G2P

SL	Description	Implementing Ministries/ Divisions	Beneficiaries (Persons in lac)	Budget (2023-24) (Taka in crore)
1	Honorarium for injured and others Heroic Freedom Fighter	Liberation War Affairs	0.13	480.00
2	Medical treatment and honorarium of martyred families and war-wounded heroic freedom fighters ²	Liberation War Affairs	2.00	16.71
3	Work For Money (WFM)	MoDMR	18.20	1500.00
4	Test Relief (TR) (Cash)	MoDMR	3.69	1450.00
5	Housing Support for Homeless People ⁷ /House grant	MoDMR	1.83	27.50
6	Interest subsidy for small and medium enterprises (including cottage industries) due to Corona Pandemic	Finance Division	0.03	5000.00
7	Financial support for Cancer, Kidney and Liver Cirrhosis and other patients	MoSW	0.40	200.00
8	Grants for the families of government employees died on duty of service	MoPA	0.03	310.89
9	Interest Free Micro-Credit Program for RSS	MoSW		30.00
10	Neuro-Developmental Disability Protection Trust	MoSW	3.15	36.08
11	Welfare Trust for Physical Disabilities	MoSW	0.09	20.00
12	National Service	MoYS	0.03	4.29
13	Investment Component for Vulnerable Group Development Program (ICVGD)	MoWCA	1.00	231.88
14	Rural employment and road maintenance	LGD	0.49	409.18
15	Infrastructure and livelihood Improvement in Haor and Coastal Area	LGD	0.01	16.86

Single Registry System

Slide- 6

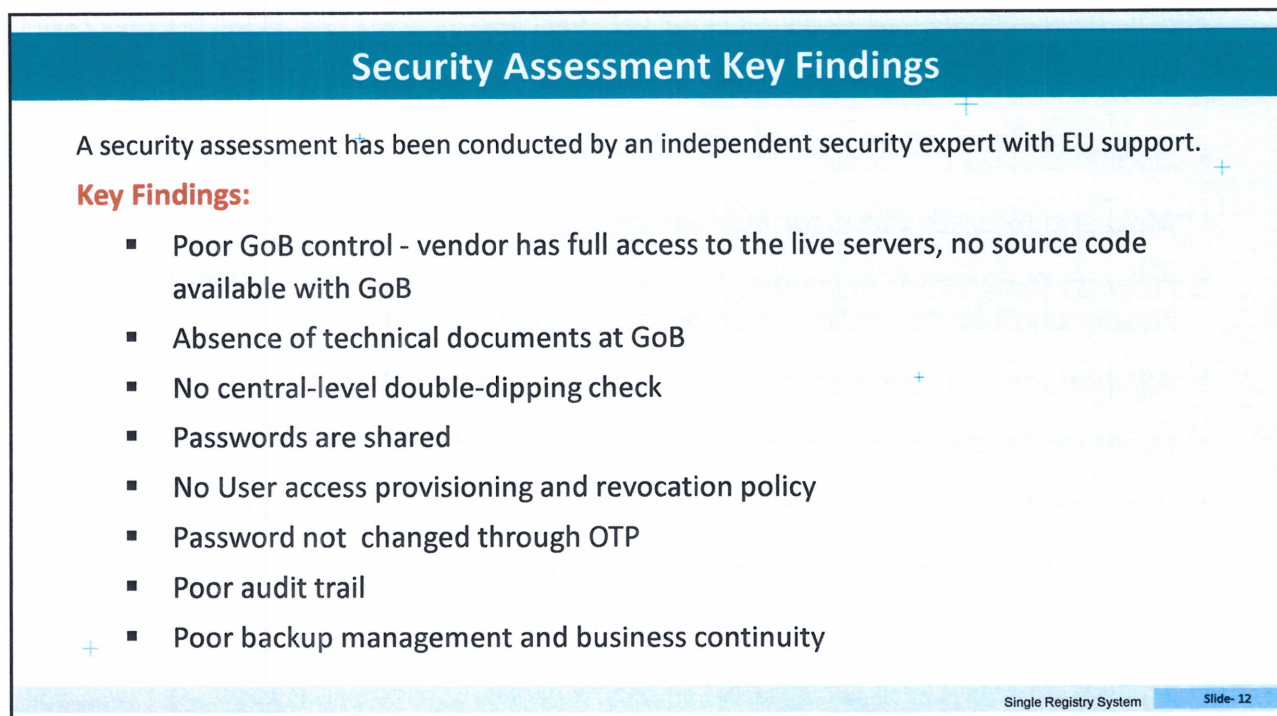
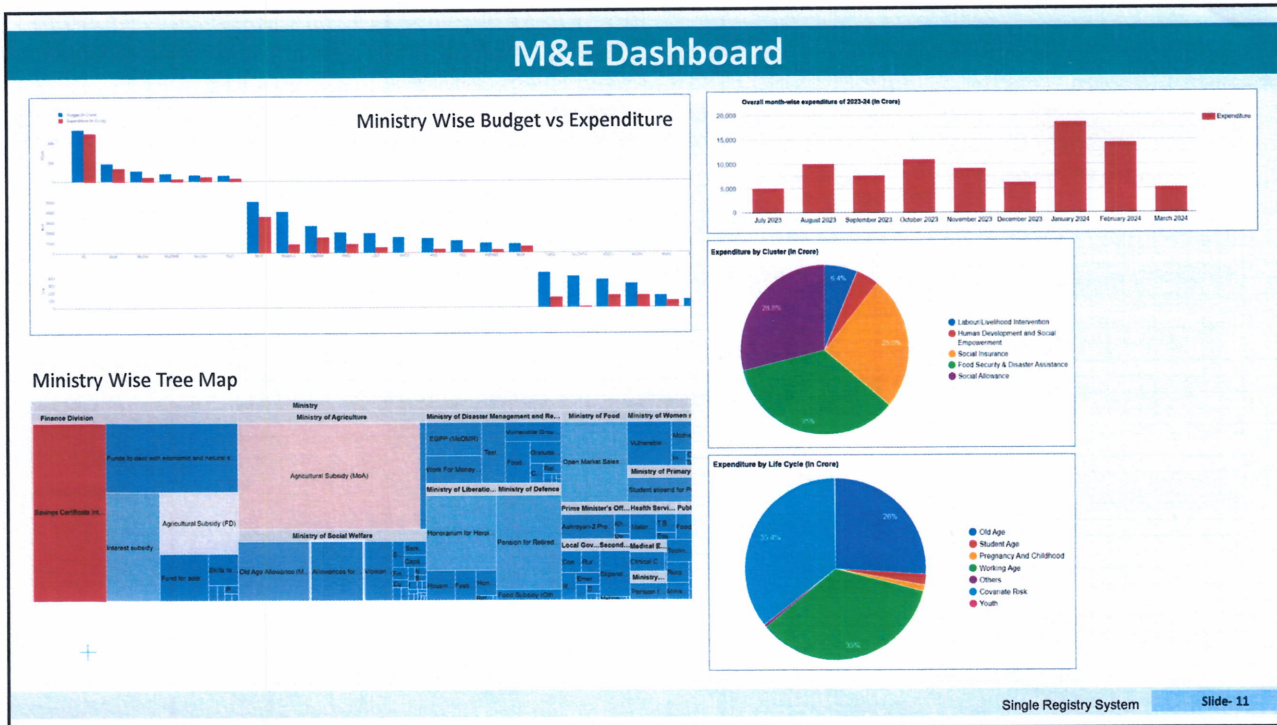




Recent Significant Completed Tasks

- Double-dipping API developed and ready for using by programme MISs;
- MoU and API with BDRIS for BRN validation;
- API with Bangladesh Telecommunication Regulatory Commission (BTRC) checks whether the mobile no is registered against a given NID;
- API with MFS - Bkash, Rocket and Nagad has been completed;
- Developed a common data set for all safety net programs by following CCDS;
- Prepared an interactive dashboard for the Single Registry system;
- Security Assessments of all MISs have been performed.

Single Registry System Slide- 10



Single Registry Implementation Roadmap

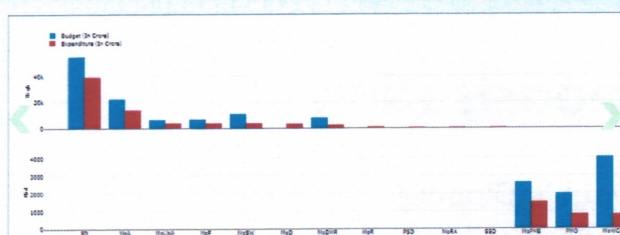
Activities	Timeline
Launch a portal for Social Protection in Bangladesh	June 2024
Provide access to CD/FD, LMs, departments, schemes and local administration at the district level	Dec 2024
Implementation of double-dipping and beneficiary data collection APIs in all MISs	June 2025
Interoperability with other databases of the GoB like the databases of employees, pensioners, TIN, MPO teachers, saving certificates, land, and agriculture for eligibility checking.	June 2026
AI-based map generation for socioeconomic and health indicators.	June 2026
Implementation of self-registration for beneficiaries in all MISs.	June 2026
Launching of a mobile app for collecting potential beneficiary information	June 2025
Integration of non-cash programmes with Single Registry	June 2026
Implementation of NID-account number pair checking in all MISs	June 2025
Help develop MISs for manually/Excel based programmes	June 2026

Single Registry System

Slide- 13

Social Protection Portal

Login



Ministry 28	Program 115
G2P Program 19	G2P Coverage 83.48%
Budget 126297.62 Crore	Expenditure 73655.85 Crore
Cash-based Program 34	Budget of Cash Program 59178.01 Crore



"In the Mujib Year, we promised that the money of the beneficiaries of the social safety net program would reach the doorsteps of the people through G2P system,"_ Honorable Prime Minister Sheikh Hasina

Line Ministries MIS's

PESP	DSHE	DME	HSP	DOL	DTE	DSS	MOWLA	MCBP	Single Registry
visit	visit	visit	visit	visit	visit	visit	visit	visit	visit

Program Brief:

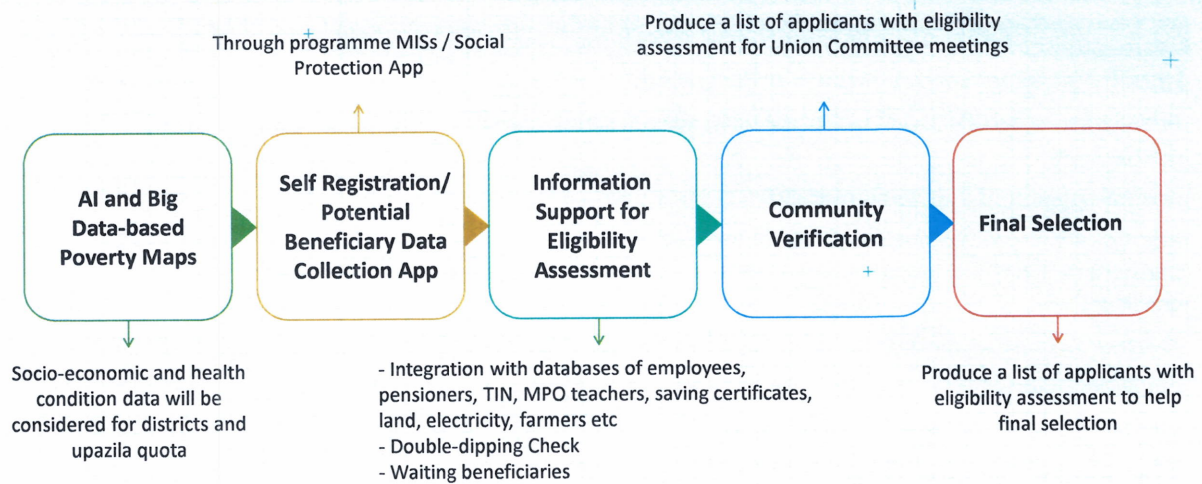
PESP	DSHE	DME	HSP	DOL	DTE	DSS	MOWLA	MCBP	Single Registry
details	details	details	details	details	details	details	details	details	details



Single Registry System

Slide- 14

Single Registry Assisted Beneficiary Selection



Single Registry System

Slide- 15

System Demonstration

Dashboard | Double Dipping
Beneficiary Management and Payroll | G2P Payment

THINK  BIG

