



National Social Security Strategy (NSSS) of Bangladesh

**Mohammed Shahidul Islam
Deputy Project Director
SSPS Programme, Cabinet Division**

29 September 2018

Introduction

- The Government is strongly committed to reducing poverty, improving human development and reducing inequality. This commitment is reflected in Vision 2021, the Perspective Plan 2010-2021 and in the Sixth and 7th Five Year Plan FY11-FY15.
- 7th Five Plan emphasized on the need to reform and strengthen the social protection programs in favor of the extreme poor.
- But, there was considerable leakage of allocated funds and a significant percentage of household beneficiaries are non-poor.
- Consequently, Government decides to formulate National Social Security Strategy (NSSS) to streamline the social security programmes.

BACKGROUND OF NSSS

- The Cabinet meeting held on 10th September 2012 entrusted the GED of the Planning Commission to prepare the National Social Security Strategy under the guidance of a Central Monitoring Committee (CMC) for the Social Safety Net Programmes Chaired by the Cabinet Secretary.

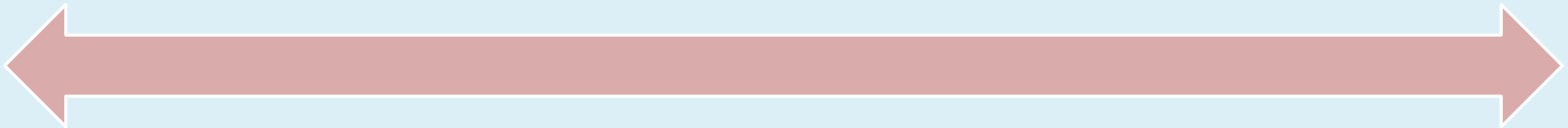
Preparation Of NSSS

- A Framework Paper was prepared by GED, endorsed by the 11 member Sub-committee of CMC led by Cabinet Division
- A Vision Workshop was held on October 2013 to prepare the Vision of the Social Security Strategy.
- Ten Background Studies related to Social Security were prepared and reviewed.
- A strong process of regional and national consultation helped shape the contents and recommendations of the NSSS.
- The Draft NSSS was circulated to all Ministries/Divisions and DPs dealing with poverty issues and dealing with SSNPs. Meeting held on 9th January 2014 with the senior officials of all the Ministries/Divisions.
- The Cabinet meeting held on 1st June 2015 approved the National Social Security Strategy of Bangladesh.

Vision



Build an inclusive Social Security System (SSS) for all deserving Bangladeshis that effectively tackles and prevents poverty and inequality and contributes to broader human development, employment and economic growth.

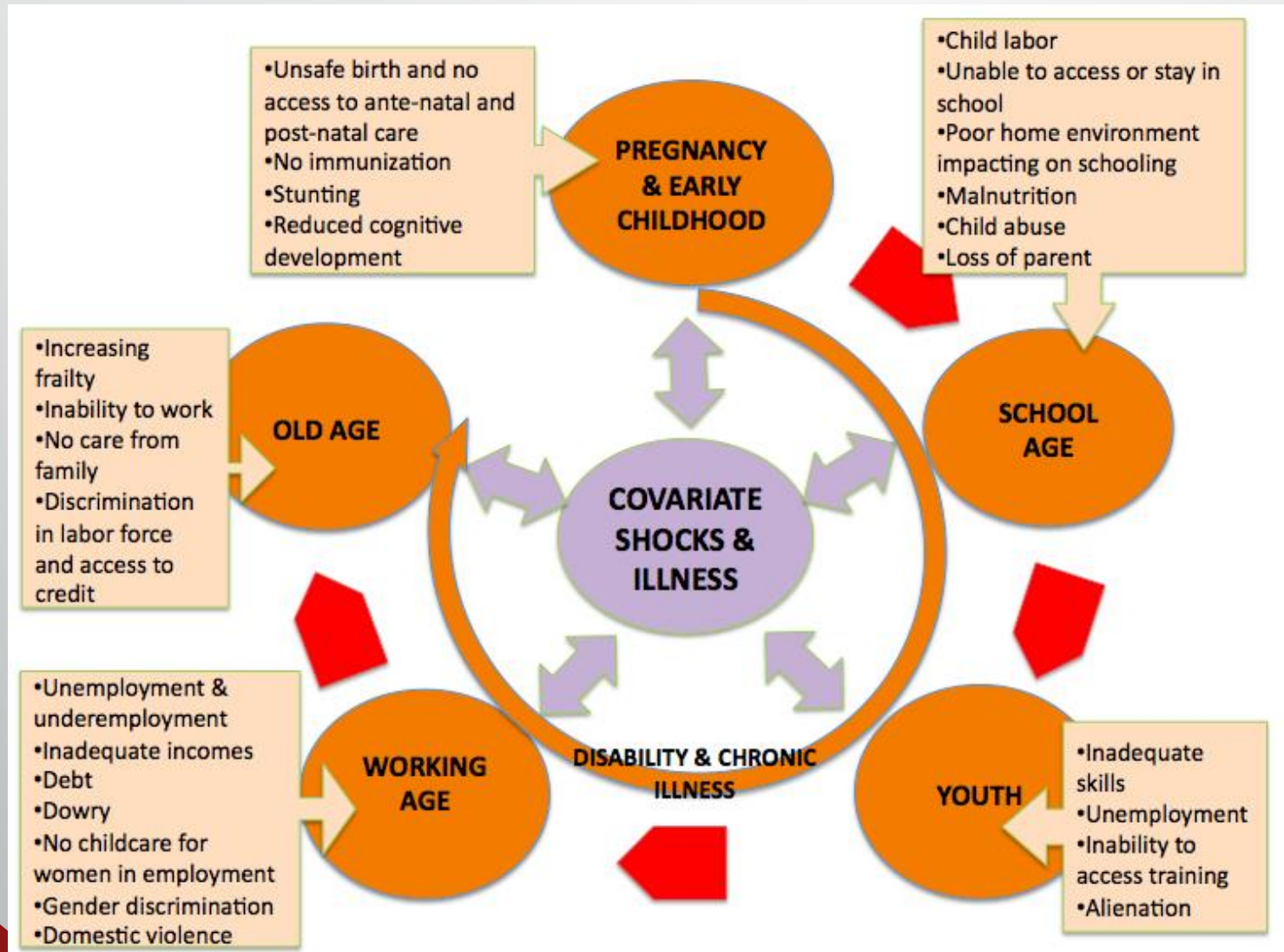


Mission



Reform the national SSS by ensuring more efficient and effective use of resources, strengthened delivery systems and progress towards a more inclusive form of Social Security that effectively tackles lifecycle risks, prioritising the poorest and most vulnerable members of society

LIFE CYCLE RISKS



Institutional Reforms



CMC led Thematic Clusters



Single Registry MIS



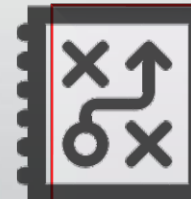
Government to Person (G2P) Payment



Beneficiary Database by PMT

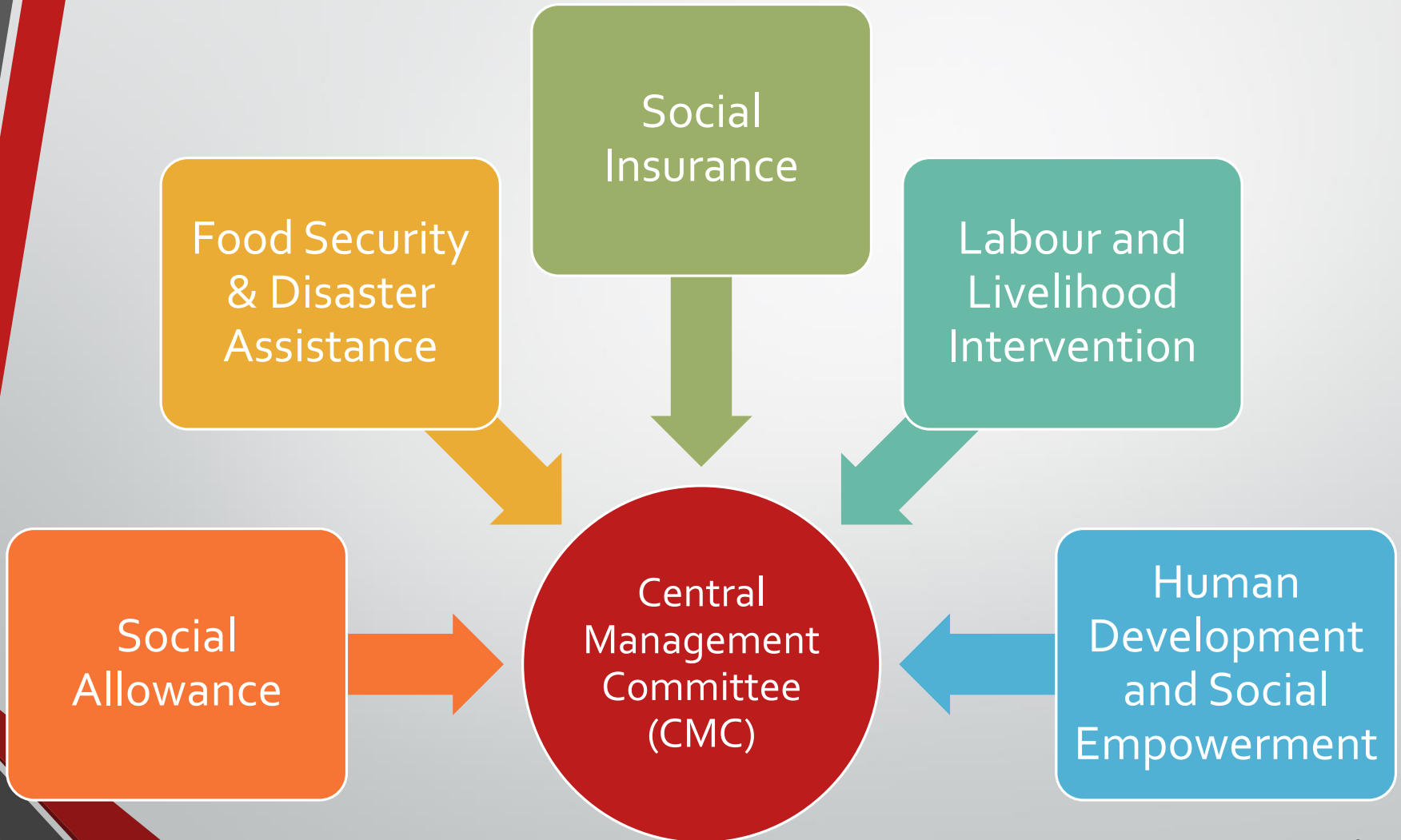


Grievance Redress System (GRS)



Results Based M&E

Thematic Clusters



Programme Reforms...

- ▶ 1. Strengthening Social Security for the Children (age <1 – 18)
 - ▶ --Child Benefit
 - ▶ --Primary and Secondary School Stipends
 - ▶ -- Continuing Orphan's and School Meals Programmes
 - ▶ --Ensuring Child Maintenance Payment for Abandoned Children
 - ▶ --Strengthen Immunization, Child Healthcare, Nutrition and Water and Sanitation Programmes.
- ▶ 2.a Strengthening Programmes for Working Age (age 19-59)
 - ▶ --Strengthen Education and Training
 - ▶ --Strengthen Workfare Programmes
 - ▶ --Introducing Unemployment, Accident, Sickness and Maternity Insurance under NSIS

Programme Reforms...

- ▶ 2b. Strengthening Programmes for Vulnerable Women (age 19-59)
 - ▶ -Consolidate into one VWB programme on a cash basis.
 - ▶ -- Provision of Childcare across all Formal & Informal Employment
 - ▶ -- Maternal health care
 - ▶ --Training programme
- ▶ 3. Comprehensive Pension System for the Elderly
 - ▶ -- Old Age Allowance (age 60 +)
 - ▶ --Government Service Pension
 - ▶ --The National Social Insurance Scheme (NSIS)
 - ▶ -- Private Voluntary Pensions

Programme Reforms

- ▶ 4. Strengthening the System of Social Security for People with Disabilities
- ▶ 5. Strengthening the Social Security System for the Urban Poor
- ▶ 6. Consolidate and Reform Food Security Type Programmes
- ▶ 7. Consolidate small, Special and Covariate Risk Mitigation programmes



Queries?

A decorative graphic in the bottom-left corner consisting of several overlapping diagonal lines in red and grey.

Thank you